



# DHODH rabbit pAb

Cat No.:ES5005

For research use only

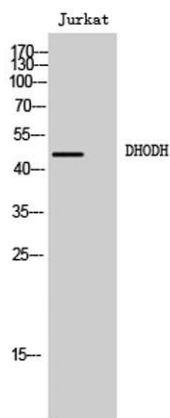
## Overview

<b>Product Name</b>	DHODH rabbit pAb
<b>Host species</b>	Rabbit
<b>Applications</b>	WB;IHC;IF;ELISA
<b>Species Cross-Reactivity</b>	Human;Rat;Mouse;
<b>Recommended dilutions</b>	Western Blot: 1/500 - 1/2000. Immunohistochemistry: 1/100 - 1/300. ELISA: 1/40000. Not yet tested in other applications.
<b>Immunogen</b>	The antiserum was produced against synthesized peptide derived from human DHODH. AA range:211-260
<b>Specificity</b>	DHODH Polyclonal Antibody detects endogenous levels of DHODH protein.
<b>Formulation</b>	Liquid in PBS containing 50% glycerol, 0.5% BSA and 0.02% sodium azide.
<b>Storage</b>	Store at -20°C. Avoid repeated freeze-thaw cycles.
<b>Protein Name</b>	Dihydroorotate dehydrogenase
<b>Gene Name</b>	DHODH
<b>Cellular localization</b>	Mitochondrion inner membrane ; Single-pass membrane protein .
<b>Purification</b>	The antibody was affinity-purified from rabbit antiserum by affinity-chromatography using epitope-specific immunogen.
<b>Clonality</b>	Polyclonal
<b>Concentration</b>	1 mg/ml
<b>Observed band</b>	48kD
<b>Human Gene ID</b>	1723
<b>Human Swiss-Prot Number</b>	Q02127
<b>Alternative Names</b>	DHODH; Dihydroorotate dehydrogenase; quinone); mitochondrial; DHodehase; Dihydroorotate oxidase
<b>Background</b>	The protein encoded by this gene catalyzes the fourth enzymatic step, the ubiquinone-mediated oxidation of dihydroorotate to orotate, in de novo pyrimidine biosynthesis. This protein is a



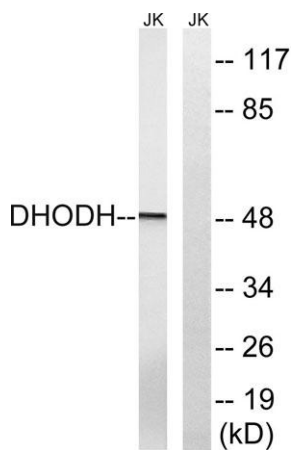
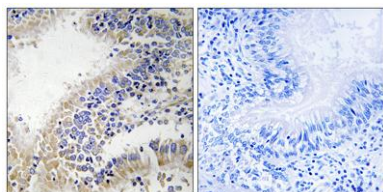


mitochondrial protein located on the outer surface of the inner mitochondrial membrane. [provided by RefSeq, Jul 2008],



Western Blot analysis of Jurkat cells using DHODH Polyclonal Antibody

Immunohistochemistry analysis of paraffin-embedded human breast carcinoma tissue, using DHODH Antibody. The picture on the right is blocked with the synthesized peptide.



Western blot analysis of lysates from Jurkat cells, using DHODH Antibody. The lane on the right is blocked with the synthesized peptide.

