



PWWP2B rabbit pAb

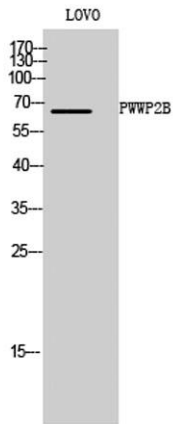
Cat No.:ES4998

For research use only

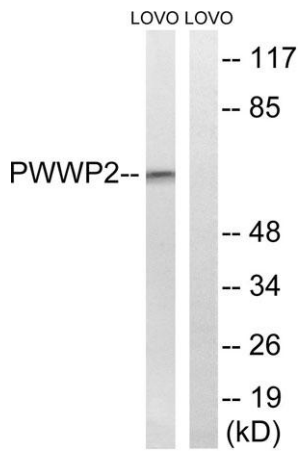
Overview

Product Name	PWWP2B rabbit pAb
Host species	Rabbit
Applications	WB;IHC;IF;ELISA
Species Cross-Reactivity	Human;Rat;Mouse;
Recommended dilutions	Western Blot: 1/500 - 1/2000. Immunohistochemistry: 1/100 - 1/300. ELISA: 1/20000. Not yet tested in other applications.
Immunogen	The antiserum was produced against synthesized peptide derived from human PWWP2B. AA range:268-317
Specificity	PWWP2B Polyclonal Antibody detects endogenous levels of PWWP2B protein.
Formulation	Liquid in PBS containing 50% glycerol, 0.5% BSA and 0.02% sodium azide.
Storage	Store at -20°C. Avoid repeated freeze-thaw cycles.
Protein Name	PWWP domain-containing protein 2B
Gene Name	PWWP2B
Cellular localization	nucleoplasm,
Purification	The antibody was affinity-purified from rabbit antiserum by affinity-chromatography using epitope-specific immunogen.
Clonality	Polyclonal
Concentration	1 mg/ml
Observed band	64kD
Human Gene ID	170394
Human Swiss-Prot Number	Q6NUJ5
Alternative Names	PWWP2B; PWWP2; PWWP domain-containing protein 2B
Background	PTM:Phosphorylated upon DNA damage, probably by ATM or ATR.,sequence caution:Translation N-terminally shortened.,similarity:Contains 1 PWWP domain.,

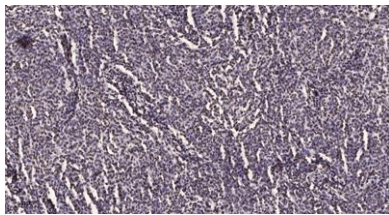




Western Blot analysis of LOVO cells using PWWP2B Polyclonal Antibody



Western blot analysis of lysates from LOVO cells, using PWWP2B Antibody. The lane on the right is blocked with the synthesized peptide.



Immunohistochemical analysis of paraffin-embedded human brain tumor. 1, Antibody was diluted at 1:200(4° overnight). 2, Tris-EDTA,pH9.0 was used for antigen retrieval. 3,Secondary antibody was diluted at 1:200(room temperature, 45min).

