



Elongin A3 rabbit pAb

Cat No.:ES4970

For research use only

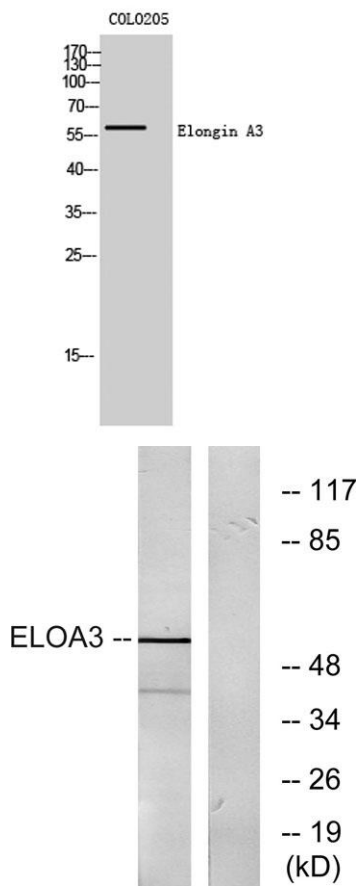
Overview

Product Name	Elongin A3 rabbit pAb
Host species	Rabbit
Applications	WB;IHC;IF;ELISA
Species Cross-Reactivity	Human;Rat;Mouse;
Recommended dilutions	Western Blot: 1/500 - 1/2000. Immunohistochemistry: 1/100 - 1/300. Immunofluorescence: 1/200 - 1/1000. ELISA: 1/20000. Not yet tested in other applications.
Immunogen	The antiserum was produced against synthesized peptide derived from human ELOA3. AA range:381-430
Specificity	Elongin A3 Polyclonal Antibody detects endogenous levels of Elongin A3 protein.
Formulation	Liquid in PBS containing 50% glycerol, 0.5% BSA and 0.02% sodium azide.
Storage	Store at -20°C. Avoid repeated freeze-thaw cycles.
Protein Name	RNA polymerase II transcription factor SIII subunit A3
Gene Name	TCEB3C
Cellular localization	integral component of membrane,elongin complex,
Purification	The antibody was affinity-purified from rabbit antiserum by affinity-chromatography using epitope-specific immunogen.
Clonality	Polyclonal
Concentration	1 mg/ml
Observed band	60kD
Human Gene ID	162699
Human Swiss-Prot Number	Q8NG57
Alternative Names	TCEB3C; TCEB3L2; RNA polymerase II transcription factor SIII subunit A3; Elongin-A3; EloA3; Transcription elongation factor B polypeptide 3C
Background	The SIII (or elongin) transcription elongation factor complex stimulates the rate of transcription





elongation by RNA polymerase II by suppressing the transient pausing of the polymerase at many sites along the DNA template. This complex is a heterotrimer, composed of the transcriptionally active subunit A, A2 or A3 (or elongin A, A2 or A3) and two regulatory subunits, B and C (or elongin B and C). This gene encodes subunit A3. A3 and A are ubiquitously expressed, whereas A2 is specifically expressed in the testis. [provided by RefSeq, Mar 2010],



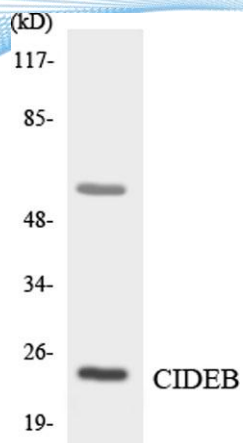
Western Blot analysis of COLO205 cells using Elongin A3 Polyclonal Antibody cells nucleus extracted by Minute TM Cytoplasmic and Nuclear Fractionation kit (SC-003, Inventbiotech, MN, USA).

Western blot analysis of lysates from COLO205 cells, using ELOA3 Antibody. The lane on the right is blocked with the synthesized peptide.

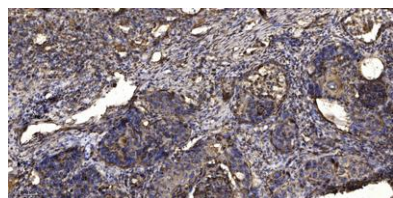




ELK Biotechnology



Western blot analysis of the lysates from COLO205 cells using CIDEB antibody.



Immunohistochemical analysis of paraffin-embedded human Squamous cell carcinoma of lung. 1, Antibody was diluted at 1:200(4° overnight). 2, Tris-EDTA,pH9.0 was used for antigen retrieval. 3,Secondary antibody was diluted at 1:200(room temperature, 45min).



+86-27-59760950

ELKbio@ELKbiotech.com

www.elkbiotech.com

23-2, No.388 Gaoxin 2nd Road,Wuhan East Lake Hi-tech Development Zone, Hubei , P.R.C