



DBH rabbit pAb

Cat No.:ES4969

For research use only

Overview

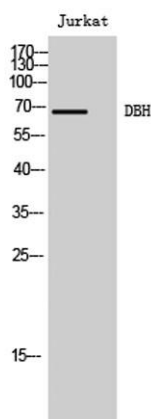
Product Name	DBH rabbit pAb
Host species	Rabbit
Applications	WB;ELISA
Species Cross-Reactivity	Human;Rat;Mouse;
Recommended dilutions	Western Blot: 1/500 - 1/2000. ELISA: 1/10000. Not yet tested in other applications.
Immunogen	The antiserum was produced against synthesized peptide derived from human DBH. AA range:401-450
Specificity	DBH Polyclonal Antibody detects endogenous levels of DBH protein.
Formulation	Liquid in PBS containing 50% glycerol, 0.5% BSA and 0.02% sodium azide.
Storage	Store at -20°C. Avoid repeated freeze-thaw cycles.
Protein Name	Dopamine beta-hydroxylase
Gene Name	DBH
Cellular localization	[Soluble dopamine beta-hydroxylase]: Cytoplasmic vesicle, secretory vesicle lumen . Cytoplasmic vesicle, secretory vesicle, chromaffin granule lumen . Secreted .; Cytoplasmic vesicle, secretory vesicle membrane ; Single-pass type II membrane protein . Cyt
Purification	The antibody was affinity-purified from rabbit antiserum by affinity-chromatography using epitope-specific immunogen.
Clonality	Polyclonal
Concentration	1 mg/ml
Observed band	69kD
Human Gene ID	1621
Human Swiss-Prot Number	P09172
Alternative Names	DBH; Dopamine beta-hydroxylase; Dopamine beta-monooxygenase
Background	The protein encoded by this gene is an





oxidoreductase belonging to the copper type II, ascorbate-dependent monooxygenase family. It is present in the synaptic vesicles of postganglionic sympathetic neurons and converts dopamine to norepinephrine. It exists in both soluble and membrane-bound forms, depending on the absence or presence, respectively, of a signal peptide. [provided by RefSeq, Jul 2008],

Western Blot analysis of Jurkat cells using DBH Polyclonal Antibody



Western blot analysis of the lysates from Jurkat cells using DBH antibody.

