



DGK- θ rabbit pAb

Cat No.:ES4961

For research use only

Overview

Product Name	DGK- θ rabbit pAb
Host species	Rabbit
Applications	WB;IHC;IF;ELISA
Species Cross-Reactivity	Human;Rat;Mouse;
Recommended dilutions	Western Blot: 1/500 - 1/2000. Immunohistochemistry: 1/100 - 1/300. ELISA: 1/10000. Not yet tested in other applications.
Immunogen	The antiserum was produced against synthesized peptide derived from human DGKQ. AA range:691-740
Specificity	DGK- θ Polyclonal Antibody detects endogenous levels of DGK- θ protein.
Formulation	Liquid in PBS containing 50% glycerol, 0.5% BSA and 0.02% sodium azide.
Storage	Store at -20°C. Avoid repeated freeze-thaw cycles.
Protein Name	Diacylglycerol kinase theta
Gene Name	DGKQ
Cellular localization	Cytoplasm . Cytoplasm, cytosol . Cell membrane . Cell junction, synapse . Cytoplasm, cytoskeleton . Nucleus . Nucleus speckle . Nucleus matrix . Translocates to the plasma membrane in response to steroid hormone receptor stimulation (PubMed:15632189). Tra
Purification	The antibody was affinity-purified from rabbit antiserum by affinity-chromatography using epitope-specific immunogen.
Clonality	Polyclonal
Concentration	1 mg/ml
Observed band	101kD
Human Gene ID	1609
Human Swiss-Prot Number	P52824
Alternative Names	DGKQ; DAGK4; Diacylglycerol kinase theta; DAG kinase theta; Diglyceride kinase theta; DGK-theta

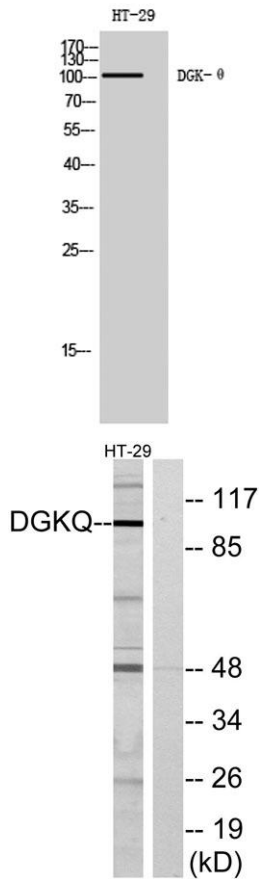




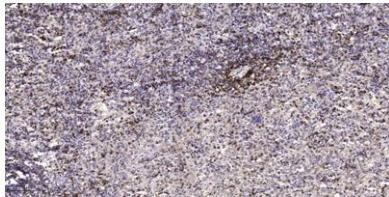
Background

The protein encoded by this gene contains three cysteine-rich domains, a proline-rich region, and a pleckstrin homology domain with an overlapping Ras-associating domain. It is localized in the speckle domains of the nucleus, and mediates the regeneration of phosphatidylinositol (PI) from diacylglycerol in the PI-cycle during cell signal transduction. [provided by RefSeq, Jul 2008],

Western Blot analysis of HT-29 cells using DGK- θ Polyclonal Antibody



Western blot analysis of lysates from HT-29 cells, using DGKQ Antibody. The lane on the right is blocked with the synthesized peptide.



Immunohistochemical analysis of paraffin-embedded human spleen tissue. 1,primary Antibody was diluted at 1:200(4° overnight). 2, Sodium citrate pH 6.0 was used for antigen retrieval(>98°C,20min). 3,Secondary antibody was diluted at 1:200

