

# DHHC-15 rabbit pAb

Cat No.:ES4951

For research use only

## Overview

Product Name	DHHC-15 rabbit pAb
Host species	Rabbit
Applications	WB;ELISA
Species Cross-Reactivity	Human;Rat;Mouse;
Recommended dilutions	Western Blot: 1/500 - 1/2000. ELISA: 1/10000. Not yet tested in other applications.
Immunogen	The antiserum was produced against synthesized peptide derived from human ZDHHC15. AA range:288-337
Specificity	DHHC-15 Polyclonal Antibody detects endogenous levels of DHHC-15 protein.
Formulation	Liquid in PBS containing 50% glycerol, 0.5% BSA and 0.02% sodium azide.
Storage	Store at -20°C. Avoid repeated freeze-thaw cycles.
Protein Name	Palmitoyltransferase ZDHHC15
Gene Name	ZDHHC15
Cellular localization	Golgi apparatus membrane ; Multi-pass membrane protein . Cell junction, synapse, postsynaptic density .
Purification	The antibody was affinity-purified from rabbit antiserum by affinity-chromatography using epitope-specific immunogen.
Clonality	Polyclonal
Concentration	1 mg/ml
Observed band	38kD
Human Gene ID	158866
Human Swiss-Prot Number	Q96MV8
Alternative Names	ZDHHC15; Palmitoyltransferase ZDHHC15; Zinc finger DHHC domain-containing protein 15; DHHC-15
Background	The protein encoded by this gene belongs to the DHHC palmitoyltransferase family. Mutations in this gene are associated with mental retardatio X-linked

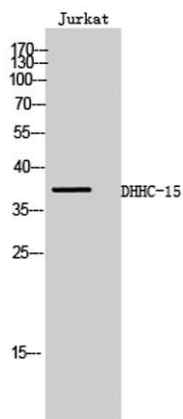




**ELK Biotechnology**

type 91 (MRX91). Alternatively spliced transcript variants encoding different isoforms have been found for this gene. [provided by RefSeq, Sep 2009],

Western Blot analysis of Jurkat cells using DHHC-15 Polyclonal Antibody



+86-27-59760950

ELKbio@ELKbiotech.com

[www.elkbiotech.com](http://www.elkbiotech.com)

23-2, No.388 Gaoxin 2nd Road,Wuhan East Lake Hi-tech Development Zone, Hubei , P.R.C