



# AR- $\beta$ 2 (phospho Ser355/S356) rabbit pAb

Cat No.:ES4918

For research use only

## Overview

<b>Product Name</b>	AR- $\beta$ 2 (phospho Ser355/S356) rabbit pAb
<b>Host species</b>	Rabbit
<b>Applications</b>	WB;IHC;IF;ELISA
<b>Species Cross-Reactivity</b>	Human;Mouse;Rat;Monkey
<b>Recommended dilutions</b>	Western Blot: 1/500 - 1/2000. Immunohistochemistry: 1/100 - 1/300. ELISA: 1/10000. Not yet tested in other applications.
<b>Immunogen</b>	The antiserum was produced against synthesized peptide derived from human Adrenergic Receptor B2 around the phosphorylation site of Ser355 and Ser356. AA range:331-380
<b>Specificity</b>	Phospho-AR- $\beta$ 2 (S355/S356) Polyclonal Antibody detects endogenous levels of AR- $\beta$ 2 protein only when phosphorylated at S355/S356.
<b>Formulation</b>	Liquid in PBS containing 50% glycerol, 0.5% BSA and 0.02% sodium azide.
<b>Storage</b>	Store at -20°C. Avoid repeated freeze-thaw cycles.
<b>Protein Name</b>	Beta-2 adrenergic receptor
<b>Gene Name</b>	ADRB2
<b>Cellular localization</b>	Cell membrane ; Multi-pass membrane protein . Early endosome . Golgi apparatus . Colocalizes with VHL at the cell membrane (PubMed:19584355). Activated receptors are internalized into endosomes prior to their degradation in lysosomes (PubMed:20559325). Ac
<b>Purification</b>	The antibody was affinity-purified from rabbit antiserum by affinity-chromatography using epitope-specific immunogen.
<b>Clonality</b>	Polyclonal
<b>Concentration</b>	1 mg/ml
<b>Observed band</b>	47kD
<b>Human Gene ID</b>	154
<b>Human Swiss-Prot Number</b>	P07550





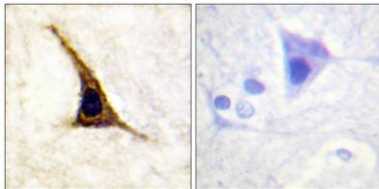
### Alternative Names

ADRB2; ADRB2R; B2AR; Beta-2 adrenergic receptor; Beta-2 adrenoreceptor; Beta-2 adrenoceptor

### Background

This gene encodes beta-2-adrenergic receptor which is a member of the G protein-coupled receptor superfamily. This receptor is directly associated with one of its ultimate effectors, the class C L-type calcium channel Ca(V)1.2. This receptor-channel complex also contains a G protein, an adenylyl cyclase, cAMP-dependent kinase, and the counterbalancing phosphatase, PP2A. The assembly of the signaling complex provides a mechanism that ensures specific and rapid signaling by this G protein-coupled receptor. This gene is intronless. Different polymorphic forms, point mutations, and/or downregulation of this gene are associated with nocturnal asthma, obesity and type 2 diabetes. [provided by RefSeq, Jul 2008],

Immunohistochemistry analysis of paraffin-embedded human brain, using Adrenergic Receptor B2 (Phospho-Ser355+Ser356) Antibody. The picture on the right is blocked with the phospho peptide.



Western blot analysis of lysates from HUVEC cells treated with serum 20% 15' and COS7 cells treated with serum 20% 15', using Adrenergic Receptor B2 (Phospho-Ser355+Ser356) Antibody. The lane on the right is blocked with the phospho peptide.

