



PPP1R2P3 rabbit pAb

Cat No.:ES4917

For research use only

Overview

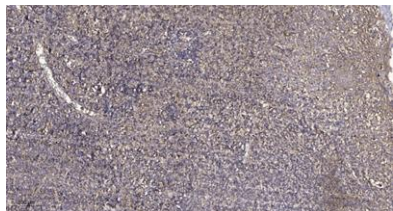
Product Name	PPP1R2P3 rabbit pAb
Host species	Rabbit
Applications	IHC;IF;ELISA
Species Cross-Reactivity	Human;Rat;Mouse;
Recommended dilutions	Immunohistochemistry: 1/100 - 1/300. ELISA: 1/40000. Not yet tested in other applications.
Immunogen	Synthesized peptide derived from PPP1R2P3 . at AA range: 40-120
Specificity	PPP1R2P3 Polyclonal Antibody detects endogenous levels of PPP1R2P3 protein.
Formulation	Liquid in PBS containing 50% glycerol, 0.5% BSA and 0.02% sodium azide.
Storage	Store at -20°C. Avoid repeated freeze-thaw cycles.
Protein Name	Putative protein phosphatase inhibitor 2-like protein 3
Gene Name	PPP1R2P3
Cellular localization	protein phosphatase type 1 complex,
Purification	The antibody was affinity-purified from rabbit antiserum by affinity-chromatography using epitope-specific immunogen.
Clonality	Polyclonal
Concentration	1 mg/ml
Observed band	
Human Gene ID	153743
Human Swiss-Prot Number	Q6NXS1
Alternative Names	PPP1R2P3; Putative protein phosphatase inhibitor 2-like protein 3; Protein phosphatase 1; regulatory subunit 2 pseudogene 3
Background	caution:Could be the product of a pseudogene.,function:Inhibitor of protein-phosphatase 1.,similarity:Belongs to the protein phosphatase inhibitor 2 family.,





ELK Biotechnology

Immunohistochemical analysis of paraffin-embedded human tonsil. 1, Antibody was diluted at 1:200(4° overnight). 2, Tris-EDTA,pH9.0 was used for antigen retrieval. 3,Secondary antibody was diluted at 1:200(room temperature, 30min).



+86-27-59760950

ELKbio@ELKbiotech.com

www.elkbiotech.com

23-2, No.388 Gaoxin 2nd Road,Wuhan East Lake Hi-tech Development Zone, Hubei , P.R.C