



# ALS2CR11 rabbit pAb

Cat No.:ES4905

For research use only

## Overview

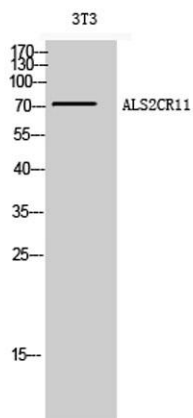
<b>Product Name</b>	ALS2CR11 rabbit pAb
<b>Host species</b>	Rabbit
<b>Applications</b>	WB;ELISA
<b>Species Cross-Reactivity</b>	Human;Rat;Mouse;
<b>Recommended dilutions</b>	Western Blot: 1/500 - 1/2000. ELISA: 1/40000. Not yet tested in other applications.
<b>Immunogen</b>	The antiserum was produced against synthesized peptide derived from human ALS2CR11. AA range:491-540
<b>Specificity</b>	ALS2CR11 Polyclonal Antibody detects endogenous levels of ALS2CR11 protein.
<b>Formulation</b>	Liquid in PBS containing 50% glycerol, 0.5% BSA and 0.02% sodium azide.
<b>Storage</b>	Store at -20°C. Avoid repeated freeze-thaw cycles.
<b>Protein Name</b>	Amyotrophic lateral sclerosis 2 chromosomal region candidate gene 11 protein
<b>Gene Name</b>	ALS2CR11
<b>Cellular localization</b>	
<b>Purification</b>	The antibody was affinity-purified from rabbit antiserum by affinity-chromatography using epitope-specific immunogen.
<b>Clonality</b>	Polyclonal
<b>Concentration</b>	1 mg/ml
<b>Observed band</b>	72kD
<b>Human Gene ID</b>	151254
<b>Human Swiss-Prot Number</b>	Q53TS8
<b>Alternative Names</b>	ALS2CR11; Amyotrophic lateral sclerosis 2 chromosomal region candidate gene 11 protein
<b>Background</b>	An autosomal recessive form of juvenile amyotrophic lateral sclerosis was originally mapped to a region of chromosome 2 that includes this gene. The encoded protein contains a calcium-dependent membrane targeting C2 domain.



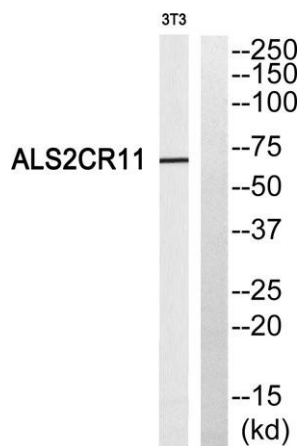


This domain is often found in proteins that are involved in membrane trafficking and signal transduction. [provided by RefSeq, Jun 2016],

Western Blot analysis of 3T3 cells using ALS2CR11 Polyclonal Antibody



Western blot analysis of ALS2CR11 Antibody. The lane on the right is blocked with the ALS2CR11 peptide.



Western blot analysis of the lysates from COLO205 cells using ALS2CR11 antibody.

