



# ALS2CR13 rabbit pAb

Cat No.:ES4896

For research use only

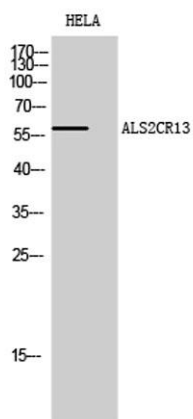
## Overview

<b>Product Name</b>	ALS2CR13 rabbit pAb
<b>Host species</b>	Rabbit
<b>Applications</b>	WB;ELISA
<b>Species Cross-Reactivity</b>	Human;Mouse
<b>Recommended dilutions</b>	Western Blot: 1/500 - 1/2000. ELISA: 1/5000. Not yet tested in other applications.
<b>Immunogen</b>	The antiserum was produced against synthesized peptide derived from human ALS2CR13. AA range:411-460
<b>Specificity</b>	ALS2CR13 Polyclonal Antibody detects endogenous levels of ALS2CR13 protein.
<b>Formulation</b>	Liquid in PBS containing 50% glycerol, 0.5% BSA and 0.02% sodium azide.
<b>Storage</b>	Store at -20°C. Avoid repeated freeze-thaw cycles.
<b>Protein Name</b>	Protein FAM117B
<b>Gene Name</b>	FAM117B
<b>Cellular localization</b>	cytoplasm,
<b>Purification</b>	The antibody was affinity-purified from rabbit antiserum by affinity-chromatography using epitope-specific immunogen.
<b>Clonality</b>	Polyclonal
<b>Concentration</b>	1 mg/ml
<b>Observed band</b>	60kD
<b>Human Gene ID</b>	150864
<b>Human Swiss-Prot Number</b>	Q6P1L5
<b>Alternative Names</b>	FAM117B; ALS2CR13; Protein FAM117B; Amyotrophic lateral sclerosis 2 chromosomal region candidate gene 13 protein
<b>Background</b>	miscellaneous:ALS2CR13 is mapped in the genomic region covering the complete candidate region for Amyotrophic lateral sclerosis 2 (ALS2).,sequence caution:Contaminating sequence. Sequence of unknown origin in the N-terminal part.,

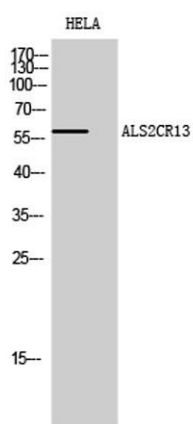




**ELK Biotechnology**



Western Blot analysis of HELA cells using ALS2CR13  
Polyclonal Antibody diluted at 1:500



Western Blot analysis of HELA cells using ALS2CR13  
Polyclonal Antibody diluted at 1:500



+86-27-59760950

[ELKbio@ELKbiotech.com](mailto:ELKbio@ELKbiotech.com)

[www.elkbiotech.com](http://www.elkbiotech.com)

23-2, No.388 Gaoxin 2nd Road, Wuhan East Lake Hi-tech Development Zone, Hubei, P.R.C