



IL-3R β (phospho Tyr593) rabbit pAb

Cat No.:ES4850

For research use only

Overview

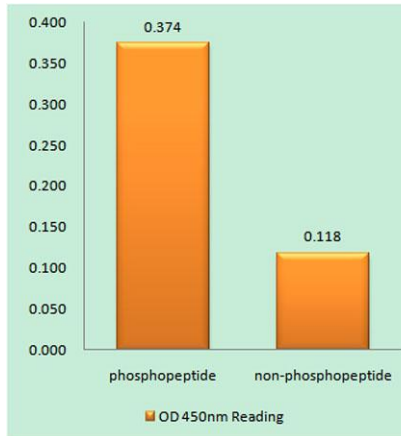
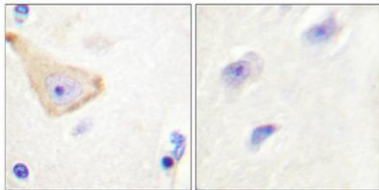
Product Name	IL-3R β (phospho Tyr593) rabbit pAb
Host species	Rabbit
Applications	WB;IHC;IF;ELISA
Species Cross-Reactivity	Human;Mouse;Rat
Recommended dilutions	Western Blot: 1/500 - 1/2000. Immunohistochemistry: 1/100 - 1/300. ELISA: 1/10000. Not yet tested in other applications.
Immunogen	The antiserum was produced against synthesized peptide derived from human IL-3R beta around the phosphorylation site of Tyr593. AA range:559-608
Specificity	Phospho-IL-3R β (Y593) Polyclonal Antibody detects endogenous levels of IL-3R β protein only when phosphorylated at Y593.
Formulation	Liquid in PBS containing 50% glycerol, 0.5% BSA and 0.02% sodium azide.
Storage	Store at -20°C. Avoid repeated freeze-thaw cycles.
Protein Name	Cytokine receptor common subunit beta
Gene Name	CSF2RB
Cellular localization	Membrane; Single-pass type I membrane protein.
Purification	The antibody was affinity-purified from rabbit antiserum by affinity-chromatography using epitope-specific immunogen.
Clonality	Polyclonal
Concentration	1 mg/ml
Observed band	125kD
Human Gene ID	1439
Human Swiss-Prot Number	P32927
Alternative Names	CSF2RB; IL3RB; IL5RB; Cytokine receptor common subunit beta; CDw131; GM-CSF/IL-3/IL-5 receptor common beta subunit; CD antigen CD131
Background	The protein encoded by this gene is the common beta chain of the high affinity receptor for IL-3, IL-5 and CSF. Defects in this gene have been reported to





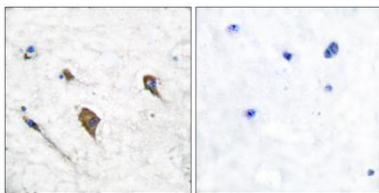
be associated with protein alveolar proteinosis (PAP). [provided by RefSeq, Jul 2008],

Immunohistochemical analysis of paraffin-embedded Human brain. Antibody was diluted at 1:100(4° overnight). High-pressure and temperature Tris-EDTA,pH8.0 was used for antigen retrieval. Negative contrl (right) obtained from antibody was pre-absorbed by i



Enzyme-Linked Immunosorbent Assay (Phospho-ELISA) for Immunogen Phosphopeptide (Phospho-left) and Non-Phosphopeptide (Phospho-right), using IL-3R beta (Phospho-Tyr593) Antibody

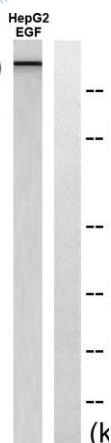
Immunohistochemistry analysis of paraffin-embedded human brain, using IL-3R beta (Phospho-Tyr593) Antibody. The picture on the right is blocked with the phospho peptide.





ELK Biotechnology

IL-3R β (Phospho-Tyr593)



Western blot analysis of lysates from RAW264.7 cells treated with G-CSF 25ng/ml 15', using IL-3R beta (Phospho-Tyr593) Antibody. The lane on the right is blocked with the phospho peptide.



+86-27-59760950

ELKbio@ELKbiotech.com

www.elkbiotech.com

23-2, No.388 Gaoxin 2nd Road,Wuhan East Lake Hi-tech Development Zone, Hubei , P.R.C