



LDLRAD3 rabbit pAb

Cat No.:ES4839

For research use only

Overview

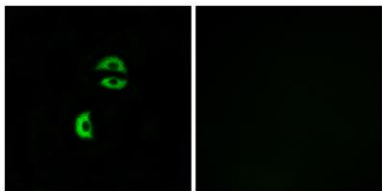
Product Name	LDLRAD3 rabbit pAb
Host species	Rabbit
Applications	WB;IHC
Species Cross-Reactivity	Human;Mouse
Recommended dilutions	WB 1:500-2000;IHC-p 1:50-300
Immunogen	The antiserum was produced against synthesized peptide derived from human LDLRAD3. AA range:37-86
Specificity	LDLRAD3 Polyclonal Antibody detects endogenous levels of LDLRAD3 protein.
Formulation	Liquid in PBS containing 50% glycerol, 0.5% BSA and 0.02% sodium azide.
Storage	Store at -20°C. Avoid repeated freeze-thaw cycles.
Protein Name	Low-density lipoprotein receptor class A domain-containing protein 3
Gene Name	LDLRAD3
Cellular localization	Cell membrane ; Single-pass type I membrane protein .
Purification	The antibody was affinity-purified from rabbit antiserum by affinity-chromatography using epitope-specific immunogen.
Clonality	Polyclonal
Concentration	1 mg/ml
Observed band	37kD
Human Gene ID	143458
Human Swiss-Prot Number	Q86YD5
Alternative Names	LDLRAD3; Low-density lipoprotein receptor class A domain-containing protein 3
Background	similarity:Belongs to the LDLR family.,similarity:Contains 3 LDL-receptor class A domains.,



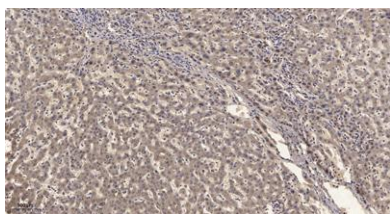


ELK Biotechnology

Immunofluorescence analysis of A549 cells, using LDLRAD3 Antibody. The picture on the right is blocked with the synthesized peptide.



Immunohistochemical analysis of paraffin-embedded human liver cancer. 1, Antibody was diluted at 1:200(4° overnight). 2, Tris-EDTA,pH9.0 was used for antigen retrieval. 3,Secondary antibody was diluted at 1:200(room temperature, 45min).



+86-27-59760950

ELKbio@ELKbiotech.com

www.elkbiotech.com

23-2, No.388 Gaoxin 2nd Road,Wuhan East Lake Hi-tech Development Zone, Hubei , P.R.C