



KG19 rabbit pAb

Cat No.:ES4826

For research use only

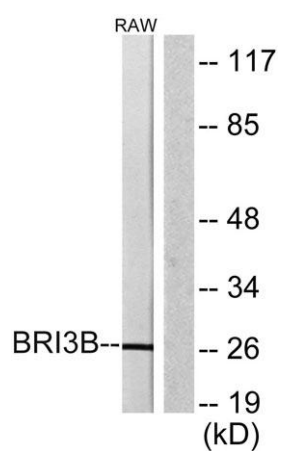
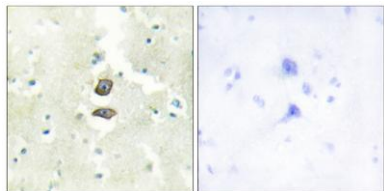
Overview

| | |
|---------------------------------|-----------------------------------------------------------------------------------------------------------------------------------------------------------------------|
| Product Name | KG19 rabbit pAb |
| Host species | Rabbit |
| Applications | WB;IHC;IF;ELISA |
| Species Cross-Reactivity | Human;Mouse |
| Recommended dilutions | Western Blot: 1/500 - 1/2000. Immunohistochemistry: 1/100 - 1/300. Immunofluorescence: 1/200 - 1/1000. ELISA: 1/20000. Not yet tested in other applications. |
| Immunogen | The antiserum was produced against synthesized peptide derived from human BRI3B. AA range:1-50 |
| Specificity | KG19 Polyclonal Antibody detects endogenous levels of KG19 protein. |
| Formulation | Liquid in PBS containing 50% glycerol, 0.5% BSA and 0.02% sodium azide. |
| Storage | Store at -20°C. Avoid repeated freeze-thaw cycles. |
| Protein Name | BRI3-binding protein |
| Gene Name | BRI3BP |
| Cellular localization | Mitochondrion outer membrane ; Multi-pass membrane protein . |
| Purification | The antibody was affinity-purified from rabbit antiserum by affinity-chromatography using epitope-specific immunogen. |
| Clonality | Polyclonal |
| Concentration | 1 mg/ml |
| Observed band | 27kD |
| Human Gene ID | 140707 |
| Human Swiss-Prot Number | Q8WY22 |
| Alternative Names | BRI3BP; KG19; BRI3-binding protein; I3-binding protein; Cervical cancer 1 proto-oncogene-binding protein KG19; HCCRBP-1 |
| Background | tissue specificity:Most abundantly expressed in brain, liver and kidney., |





Immunohistochemistry analysis of paraffin-embedded human brain tissue, using BRI3B Antibody. The picture on the right is blocked with the synthesized peptide.



Western blot analysis of lysates from RAW264.7 cells, using BRI3B Antibody. The lane on the right is blocked with the synthesized peptide.

