



# GPR151 rabbit pAb

Cat No.:ES4773

For research use only

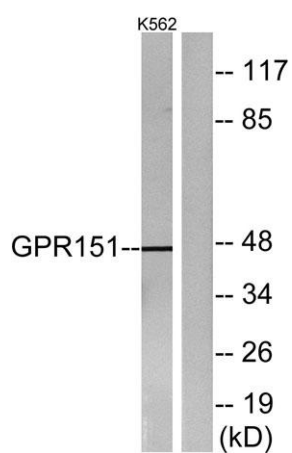
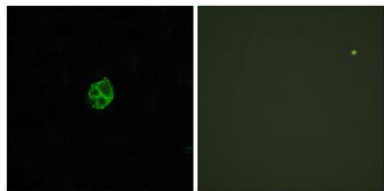
## Overview

<b>Product Name</b>	GPR151 rabbit pAb
<b>Host species</b>	Rabbit
<b>Applications</b>	WB;IF;ELISA
<b>Species Cross-Reactivity</b>	Human;Mouse;Rat
<b>Recommended dilutions</b>	Western Blot: 1/500 - 1/2000. Immunofluorescence: 1/200 - 1/1000. ELISA: 1/5000. Not yet tested in other applications.
<b>Immunogen</b>	The antiserum was produced against synthesized peptide derived from human GPR151. AA range:370-419
<b>Specificity</b>	GPR151 Polyclonal Antibody detects endogenous levels of GPR151 protein.
<b>Formulation</b>	Liquid in PBS containing 50% glycerol, 0.5% BSA and 0.02% sodium azide.
<b>Storage</b>	Store at -20°C. Avoid repeated freeze-thaw cycles.
<b>Protein Name</b>	Probable G-protein coupled receptor 151
<b>Gene Name</b>	GPR151
<b>Cellular localization</b>	Cell membrane ; Multi-pass membrane protein .
<b>Purification</b>	The antibody was affinity-purified from rabbit antiserum by affinity-chromatography using epitope-specific immunogen.
<b>Clonality</b>	Polyclonal
<b>Concentration</b>	1 mg/ml
<b>Observed band</b>	46kD
<b>Human Gene ID</b>	134391
<b>Human Swiss-Prot Number</b>	Q8TDV0
<b>Alternative Names</b>	GPR151; PGR7; Probable G-protein coupled receptor 151; G-protein coupled receptor PGR7; GPCR-2037
<b>Background</b>	function:Orphan receptor.,similarity:Belongs to the G-protein coupled receptor 1 family,.

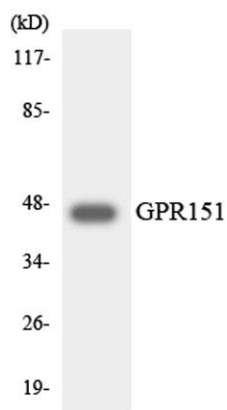




Immunofluorescence analysis of HUVEC cells, using GPR151 Antibody. The picture on the right is blocked with the synthesized peptide.



Western blot analysis of lysates from K562 cells, using GPR151 Antibody. The lane on the right is blocked with the synthesized peptide.



Western blot analysis of the lysates from HeLa cells using GPR151 antibody.

