



# Acetyl Histone H1 (K25) rabbit pAb

Cat No.:ES4765

For research use only

## Overview

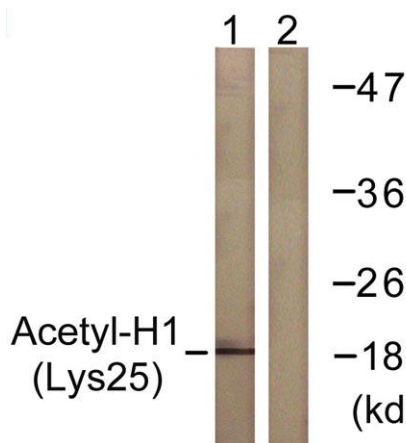
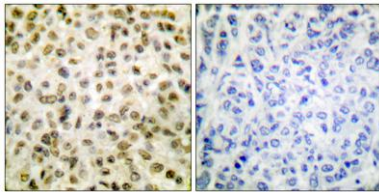
<b>Product Name</b>	Acetyl Histone H1 (K25) rabbit pAb
<b>Host species</b>	Rabbit
<b>Applications</b>	WB;IHC;IF;ELISA
<b>Species Cross-Reactivity</b>	Human;Monkey
<b>Recommended dilutions</b>	Western Blot: 1/500 - 1/2000. Immunohistochemistry: 1/100 - 1/300. ELISA: 1/20000. Not yet tested in other applications.
<b>Immunogen</b>	The antiserum was produced against synthesized peptide derived from human Histone H1 around the acetylated site of Lys25. AA range:131-180
<b>Specificity</b>	Acetyl-Histone H1 (K25) Polyclonal Antibody detects endogenous levels of Histone H1 protein only when acetylated at K25.
<b>Formulation</b>	Liquid in PBS containing 50% glycerol, 0.5% BSA and 0.02% sodium azide.
<b>Storage</b>	Store at -20°C. Avoid repeated freeze-thaw cycles.
<b>Protein Name</b>	Histone H1 $\alpha$
<b>Gene Name</b>	H1FOO
<b>Cellular localization</b>	Cytoplasm . Nucleus . Chromosome .
<b>Purification</b>	The antibody was affinity-purified from rabbit antiserum by affinity-chromatography using epitope-specific immunogen.
<b>Clonality</b>	Polyclonal
<b>Concentration</b>	1 mg/ml
<b>Observed band</b>	20kD
<b>Human Gene ID</b>	132243
<b>Human Swiss-Prot Number</b>	Q8IZA3
<b>Alternative Names</b>	H1FOO; H1 $\alpha$ ; OSH1; Histone H1 $\alpha$ ; Oocyte-specific histone H1; Oocyte-specific linker histone H1; oSH1;H1K25AC
<b>Background</b>	Histones are basic nuclear proteins that are responsible for the nucleosome structure of the chromosomal fiber in eukaryotes. Nucleosomes





consist of approximately 146 bp of DNA wrapped around a histone octamer composed of pairs of each of the four core histones (H2A, H2B, H3, and H4). The chromatin fiber is further compacted through the interaction of a linker histone, H1, with the DNA between the nucleosomes to form higher order chromatin structures. The protein encoded is a replication-independent histone that is a member of the histone H1 family. This gene contains introns, unlike most histone genes. The related mouse gene is expressed only in oocytes. [provided by RefSeq, Oct 2015],

Immunohistochemistry analysis of paraffin-embedded human breast carcinoma tissue, using Histone H1 (Acetyl-Lys25) Antibody. The picture on the right is blocked with the synthesized peptide.



Western blot analysis of lysates from COS7 cells, treated with TSA 400nM 24h, using Histone H1 (Acetyl-Lys25) Antibody. The lane on the right is blocked with the synthesized peptide.

