

COL19A1 rabbit pAb

Cat No.:ES4759

For research use only

Overview

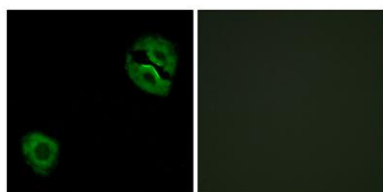
Product Name	COL19A1 rabbit pAb
Host species	Rabbit
Applications	WB;IHC;IF;ELISA
Species Cross-Reactivity	Human;Rat;Mouse;
Recommended dilutions	Western Blot: 1/500 - 1/2000. Immunohistochemistry: 1/100 - 1/300. Immunofluorescence: 1/200 - 1/1000. ELISA: 1/10000. Not yet tested in other applications.
Immunogen	The antiserum was produced against synthesized peptide derived from human Collagen XIX alpha1. AA range:421-470
Specificity	COL19A1 Polyclonal Antibody detects endogenous levels of COL19A1 protein.
Formulation	Liquid in PBS containing 50% glycerol, 0.5% BSA and 0.02% sodium azide.
Storage	Store at -20°C. Avoid repeated freeze-thaw cycles.
Protein Name	Collagen alpha-1(XIX) chain
Gene Name	COL19A1
Cellular localization	Secreted, extracellular space, extracellular matrix .
Purification	The antibody was affinity-purified from rabbit antiserum by affinity-chromatography using epitope-specific immunogen.
Clonality	Polyclonal
Concentration	1 mg/ml
Observed band	120kD
Human Gene ID	1310
Human Swiss-Prot Number	Q14993
Alternative Names	COL19A1; Collagen alpha-1(XIX) chain; Collagen alpha-1(Y) chain
Background	This gene encodes the alpha chain of type XIX collagen, a member of the FACIT collagen family (fibril-associated collagens with interrupted helices). Although the function of this collagen is not known,





other members of this collagen family are found in association with fibril-forming collagens such as type I and II, and serve to maintain the integrity of the extracellular matrix. The transcript produced from this gene has an unusually large 3' UTR which has not been completely sequenced. [provided by RefSeq, Jul 2008],

Immunofluorescence analysis of A549 cells, using Collagen XIX alpha1 Antibody. The picture on the right is blocked with the synthesized peptide.



Immunohistochemistry analysis of paraffin-embedded human thymus gland tissue, using Collagen XIX alpha1 Antibody. The picture on the right is blocked with the synthesized peptide.

