



COL16A1 rabbit pAb

Cat No.:ES4757

For research use only

Overview

Product Name	COL16A1 rabbit pAb
Host species	Rabbit
Applications	IHC;IF;ELISA
Species Cross-Reactivity	Human;Mouse
Recommended dilutions	Immunohistochemistry: 1/100 - 1/300. ELISA: 1/5000. Not yet tested in other applications.
Immunogen	The antiserum was produced against synthesized peptide derived from human Collagen XVI alpha1. AA range:1121-1170
Specificity	COL16A1 Polyclonal Antibody detects endogenous levels of COL16A1 protein.
Formulation	Liquid in PBS containing 50% glycerol, 0.5% BSA and 0.02% sodium azide.
Storage	Store at -20°C. Avoid repeated freeze-thaw cycles.
Protein Name	Collagen alpha-1(XVI) chain
Gene Name	COL16A1
Cellular localization	Secreted, extracellular space, extracellular matrix .
Purification	The antibody was affinity-purified from rabbit antiserum by affinity-chromatography using epitope-specific immunogen.
Clonality	Polyclonal
Concentration	1 mg/ml
Observed band	
Human Gene ID	1307
Human Swiss-Prot Number	Q07092
Alternative Names	COL16A1; FP1572; Collagen alpha-1(XVI) chain
Background	This gene encodes the alpha chain of type XVI collagen, a member of the FACIT collagen family (fibril-associated collagens with interrupted helices). Members of this collagen family are found in association with fibril-forming collagens such as type I and II, and serve to maintain the integrity of the extracellular matrix. High levels of type XVI collagen

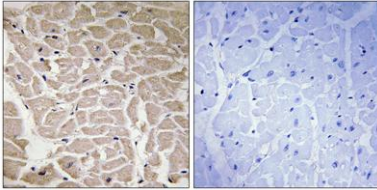




ELK Biotechnology

have been found in fibroblasts and keratinocytes,
and in smooth muscle and amnion. [provided by
RefSeq, Jul 2008],

Immunohistochemistry analysis of paraffin-embedded
human heart tissue, using Collagen XVI alpha1 Antibody.
The picture on the right is blocked with the synthesized
peptide.



+86-27-59760950

ELKbio@ELKbiotech.com

www.elkbiotech.com

23-2, No.388 Gaoxin 2nd Road, Wuhan East Lake Hi-tech Development Zone, Hubei, P.R.C