



COL4A2 rabbit pAb

Cat No.:ES4736

For research use only

Overview

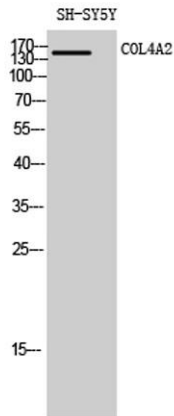
Product Name	COL4A2 rabbit pAb
Host species	Rabbit
Applications	WB;IHC;IF;ELISA
Species Cross-Reactivity	Human;Mouse
Recommended dilutions	Western Blot: 1/500 - 1/2000. Immunohistochemistry: 1/100 - 1/300. Immunofluorescence: 1/200 - 1/1000. ELISA: 1/20000. Not yet tested in other applications.
Immunogen	The antiserum was produced against synthesized peptide derived from human Collagen IV alpha2. AA range:151-200
Specificity	COL4A2 Polyclonal Antibody detects endogenous levels of COL4A2 protein.
Formulation	Liquid in PBS containing 50% glycerol, 0.5% BSA and 0.02% sodium azide.
Storage	Store at -20°C. Avoid repeated freeze-thaw cycles.
Protein Name	Collagen alpha-2(IV) chain
Gene Name	COL4A2
Cellular localization	Secreted, extracellular space, extracellular matrix, basement membrane.
Purification	The antibody was affinity-purified from rabbit antiserum by affinity-chromatography using epitope-specific immunogen.
Clonality	Polyclonal
Concentration	1 mg/ml
Observed band	150kD
Human Gene ID	1284
Human Swiss-Prot Number	P08572
Alternative Names	COL4A2; Collagen alpha-2(IV) chain
Background	This gene encodes one of the six subunits of type IV collagen, the major structural component of basement membranes. The C-terminal portion of the protein, known as canstatin, is an inhibitor of



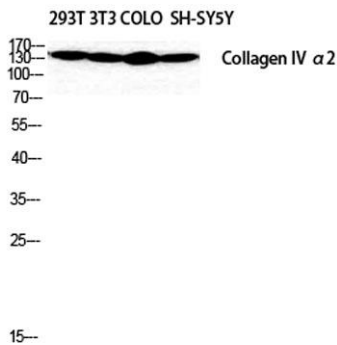


angiogenesis and tumor growth. Like the other members of the type IV collagen gene family, this gene is organized in a head-to-head conformation with another type IV collagen gene so that each gene pair shares a common promoter. [provided by RefSeq, Jul 2008],

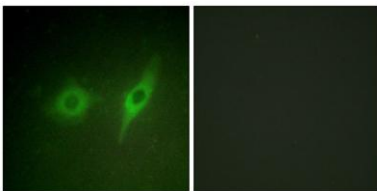
Western Blot analysis of SH-SY5Y cells using COL4A2 Polyclonal Antibody diluted at 1:2000



Western Blot analysis of SH-SY5Y 293T NIH-3T3 COLO cells using COL4A2 Polyclonal Antibody diluted at 1:2000



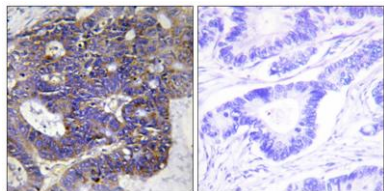
Immunofluorescence analysis of HeLa cells, using Collagen IV alpha2 Antibody. The picture on the right is blocked with the synthesized peptide.





ELK Biotechnology

Immunohistochemistry analysis of paraffin-embedded human colon carcinoma tissue, using Collagen IV alpha2 Antibody. The picture on the right is blocked with the synthesized peptide.



+86-27-59760950

ELKbio@ELKbiotech.com

www.elkbiotech.com

23-2, No.388 Gaoxin 2nd Road, Wuhan East Lake Hi-tech Development Zone, Hubei, P.R.C