



cPLA2-ε rabbit pAb

Cat No.:ES4712

For research use only

Overview

Product Name	cPLA2-ε rabbit pAb
Host species	Rabbit
Applications	IHC;IF;ELISA
Species Cross-Reactivity	Human;Rat;Mouse;
Recommended dilutions	Immunohistochemistry: 1/100 - 1/300. ELISA: 1/40000. Not yet tested in other applications.
Immunogen	The antiserum was produced against synthesized peptide derived from human PLA2G4E. AA range:401-450
Specificity	cPLA2-ε Polyclonal Antibody detects endogenous levels of cPLA2-ε protein.
Formulation	Liquid in PBS containing 50% glycerol, 0.5% BSA and 0.02% sodium azide.
Storage	Store at -20°C. Avoid repeated freeze-thaw cycles.
Protein Name	Cytosolic phospholipase A2 epsilon
Gene Name	PLA2G4E
Cellular localization	Cytoplasm, cytosol . Early endosome membrane ; Peripheral membrane protein ; Cytoplasmic side . Lysosome membrane ; Peripheral membrane protein ; Cytoplasmic side . Cell membrane ; Peripheral membrane protein; Cytoplasmic side . Targeted to clathrin-indep
Purification	The antibody was affinity-purified from rabbit antiserum by affinity-chromatography using epitope-specific immunogen.
Clonality	Polyclonal
Concentration	1 mg/ml
Observed band	
Human Gene ID	123745
Human Swiss-Prot Number	Q3MJ16
Alternative Names	PLA2G4E; Cytosolic phospholipase A2 epsilon; cPLA2-epsilon; Phospholipase A2 group IVE
Background	catalytic activity:Phosphatidylcholine + H(2)O =

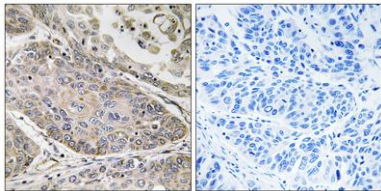




ELK Biotechnology

1-acylglycerophosphocholine + a carboxylate.,domain:The N-terminal C2 domain associates with lipid membranes and mediates its regulation by presenting the active site to its substrate in response to elevations of cytosolic Ca(2+).,enzyme regulation:Stimulated by cytosolic Ca(2+).,function:Calcium-dependent phospholipase A2 that selectively hydrolyzes glycerophospholipids in the sn-2 position.,similarity:Contains 1 C2 domain.,similarity:Contains 1 PLA2c domain.,subcellular location:Translocates to lysosomal membranes in a calcium-dependent fashion.,

Immunohistochemistry analysis of paraffin-embedded human lung carcinoma, using PLA2G4E Antibody. The picture on the right is blocked with the synthesized peptide.



+86-27-59760950

ELKbio@ELKbiotech.com

www.elkbiotech.com

23-2, No.388 Gaoxin 2nd Road,Wuhan East Lake Hi-tech Development Zone, Hubei , P.R.C