



JDP2 rabbit pAb

Cat No.:ES4705

For research use only

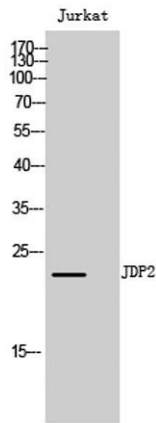
Overview

Product Name	JDP2 rabbit pAb
Host species	Rabbit
Applications	WB;IHC
Species Cross-Reactivity	Human;Mouse;Rat
Recommended dilutions	WB 1:500-2000;IHC-p 1:50-300
Immunogen	The antiserum was produced against synthesized peptide derived from human JDP2. AA range:114-163
Specificity	JDP2 Polyclonal Antibody detects endogenous levels of JDP2 protein.
Formulation	Liquid in PBS containing 50% glycerol, 0.5% BSA and 0.02% sodium azide.
Storage	Store at -20°C. Avoid repeated freeze-thaw cycles.
Protein Name	Jun dimerization protein 2
Gene Name	JDP2
Cellular localization	Nucleus .
Purification	The antibody was affinity-purified from rabbit antiserum by affinity-chromatography using epitope-specific immunogen.
Clonality	Polyclonal
Concentration	1 mg/ml
Observed band	22kD
Human Gene ID	122953
Human Swiss-Prot Number	Q8WYK2
Alternative Names	JDP2; Jun dimerization protein 2
Background	function:Component of the AP-1 transcription factor that represses transactivation mediated by the Jun family of proteins. Involved in a variety of transcriptional responses associated with AP-1 such as UV-induced apoptosis, cell differentiation, tumorigenesis and antitumogeneris. Can also function as a repressor by recruiting histone deacetylase 3/HDAC3 to the promoter region of

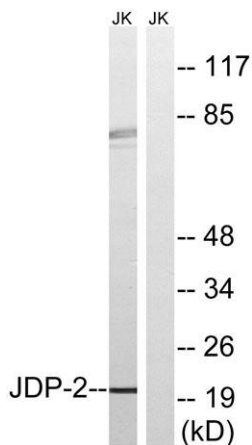




JUN. May control transcription via direct regulation of the modification of histones and the assembly of chromatin.,PTM:Phosphorylation of Thr-148 by MAPK8 in response to different stress conditions such as, UV irradiation, oxidatives stress and anisomycin treatments.,similarity:Belongs to the bZIP family. ATF subfamily.,similarity:Contains 1 bZIP domain.,subunit:Forms homodimer or heterodimer with JUN, JUNB, JUND, CEBPG and ATF2 thereby inhibiting transactivation by JUN, ATF2 and CEBPG (By similarity). Binds multiple DNA elements such as cAMP-response element (CRE) and TPA response element (TRE) either as homodimer or heterodimer.,



Western Blot analysis of Jurkat cells using JDP2 Polyclonal Antibody

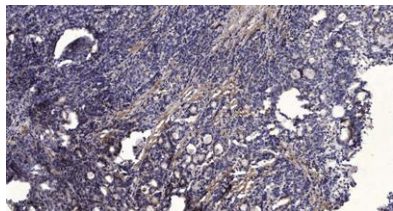


Western blot analysis of lysates from Jurkat cells, using JDP-2 Antibody. The lane on the right is blocked with the synthesized peptide.





ELK Biotechnology



Immunohistochemical analysis of paraffin-embedded human Gastric adenocarcinoma. 1, Antibody was diluted at 1:200(4° overnight). 2, Tris-EDTA,pH9.0 was used for antigen retrieval. 3,Secondary antibody was diluted at 1:200(room temperature, 45min).



+86-27-59760950

ELKbio@ELKbiotech.com

www.elkbiotech.com

23-2, No.388 Gaoxin 2nd Road,Wuhan East Lake Hi-tech Development Zone, Hubei , P.R.C