



# Casein Kinase I $\alpha$ 1/1L rabbit pAb

Cat No.:ES4699

For research use only

## Overview

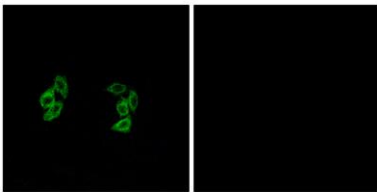
<b>Product Name</b>	Casein Kinase I $\alpha$ 1/1L rabbit pAb
<b>Host species</b>	Rabbit
<b>Applications</b>	IHC;IF;WB;ELISA
<b>Species Cross-Reactivity</b>	Human;Mouse;Rat
<b>Recommended dilutions</b>	WB 1:500-2000 Immunohistochemistry: 1/100 - 1/300. Immunofluorescence: 1/200 - 1/1000. ELISA: 1/20000. Not yet tested in other applications.
<b>Immunogen</b>	The antiserum was produced against synthesized peptide derived from human CKI- $\alpha$ 1/L. AA range:141-190
<b>Specificity</b>	Casein Kinase I $\alpha$ 1/1L Polyclonal Antibody detects endogenous levels of Casein Kinase I $\alpha$ 1/1L protein.
<b>Formulation</b>	Liquid in PBS containing 50% glycerol, 0.5% BSA and 0.02% sodium azide.
<b>Storage</b>	Store at -20°C. Avoid repeated freeze-thaw cycles.
<b>Protein Name</b>	Casein kinase I isoform alpha/Casein kinase I isoform alpha-like
<b>Gene Name</b>	CSNK1A1/CSNK1A1L
<b>Cellular localization</b>	Cytoplasm .
<b>Purification</b>	The antibody was affinity-purified from rabbit antiserum by affinity-chromatography using epitope-specific immunogen.
<b>Clonality</b>	Polyclonal
<b>Concentration</b>	1 mg/ml
<b>Observed band</b>	30kD
<b>Human Gene ID</b>	122011/1452
<b>Human Swiss-Prot Number</b>	Q8N752/P48729
<b>Alternative Names</b>	CSNK1A1L; Casein kinase I isoform alpha-like; CKI- $\alpha$ -like; CK1; CSNK1A1; Casein kinase I isoform alpha; CKI- $\alpha$ ; CK1
<b>Background</b>	catalytic activity:ATP + a protein = ADP + a phosphoprotein.,function:Casein kinases are operationally defined by their preferential utilization



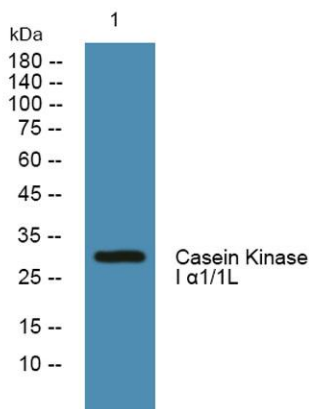
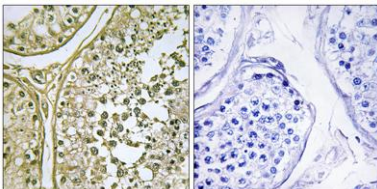


of acidic proteins such as caseins as substrates. It can phosphorylate a large number of proteins. Participates in Wnt signaling.,similarity:Belongs to the protein kinase superfamily. CK1 Ser/Thr protein kinase family. Casein kinase I subfamily.,similarity:Contains 1 protein kinase domain.,

Immunofluorescence analysis of A549 cells, using CKI-alpha1/L Antibody. The picture on the right is blocked with the synthesized peptide.



Immunohistochemistry analysis of paraffin-embedded human testis tissue, using CKI-alpha1/L Antibody. The picture on the right is blocked with the synthesized peptide.



Western blot analysis of lysates from SH-SY5Y cells, primary antibody was diluted at 1:1000, 4° over night

