



TPH2 (phospho Ser19) rabbit pAb

Cat No.:ES4689

For research use only

Overview

Product Name	TPH2 (phospho Ser19) rabbit pAb
Host species	Rabbit
Applications	WB;ELISA
Species Cross-Reactivity	Human;Mouse;Rat
Recommended dilutions	Western Blot: 1/500 - 1/2000. ELISA: 1/40000. Not yet tested in other applications.
Immunogen	Synthesized phospho-peptide around the phosphorylation site of human TPH2 (phospho Ser19)
Specificity	Phospho-TPH2 (S19) Polyclonal Antibody detects endogenous levels of TPH2 protein only when phosphorylated at S19.
Formulation	Liquid in PBS containing 50% glycerol, 0.5% BSA and 0.02% sodium azide.
Storage	Store at -20°C. Avoid repeated freeze-thaw cycles.
Protein Name	Tryptophan 5-hydroxylase 2
Gene Name	TPH2
Cellular localization	cytosol,neuron projection,
Purification	The antibody was affinity-purified from rabbit antiserum by affinity-chromatography using epitope-specific immunogen.
Clonality	Polyclonal
Concentration	1 mg/ml
Observed band	56kD
Human Gene ID	121278
Human Swiss-Prot Number	Q8IWU9
Alternative Names	TPH2; NTPH; Tryptophan 5-hydroxylase 2; Neuronal tryptophan hydroxylase; Tryptophan 5-monooxygenase 2
Background	This gene encodes a member of the pterin-dependent aromatic acid hydroxylase family. The encoded protein catalyzes the first and rate limiting step in the biosynthesis of serotonin, an

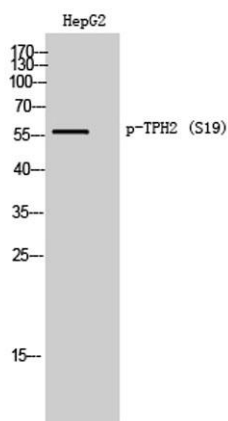




ELK Biotechnology

important hormone and neurotransmitter. Mutations in this gene may be associated with psychiatric diseases such as bipolar affective disorder and major depression. [provided by RefSeq, Feb 2016],

Western Blot analysis of HepG2 cells using Phospho-TPH2 (S19) Polyclonal Antibody



+86-27-59760950

ELKbio@ELKbiotech.com

www.elkbiotech.com

23-2, No.388 Gaoxin 2nd Road, Wuhan East Lake Hi-tech Development Zone, Hubei, P.R.C