



# RAB3IP rabbit pAb

Cat No.:ES4666

For research use only

## Overview

<b>Product Name</b>	RAB3IP rabbit pAb
<b>Host species</b>	Rabbit
<b>Applications</b>	WB;IHC;IF;ELISA
<b>Species Cross-Reactivity</b>	Human;Mouse;Rat
<b>Recommended dilutions</b>	Western Blot: 1/500 - 1/2000. Immunohistochemistry: 1/100 - 1/300. ELISA: 1/40000. Not yet tested in other applications.
<b>Immunogen</b>	The antiserum was produced against synthesized peptide derived from human RAB3IP. AA range:257-306
<b>Specificity</b>	RAB3IP Polyclonal Antibody detects endogenous levels of RAB3IP protein.
<b>Formulation</b>	Liquid in PBS containing 50% glycerol, 0.5% BSA and 0.02% sodium azide.
<b>Storage</b>	Store at -20°C. Avoid repeated freeze-thaw cycles.
<b>Protein Name</b>	Rab-3A-interacting protein
<b>Gene Name</b>	RAB3IP
<b>Cellular localization</b>	Cytoplasm . Nucleus . Cytoplasm, cytoskeleton . Cell projection, lamellipodium. Vesicle . Cytoplasm, cytoskeleton, microtubule organizing center, centrosome . Predominantly cytoplasmic but a small proportion colocalizes with SSX2 in the nucleus. Activatio
<b>Purification</b>	The antibody was affinity-purified from rabbit antiserum by affinity-chromatography using epitope-specific immunogen.
<b>Clonality</b>	Polyclonal
<b>Concentration</b>	1 mg/ml
<b>Observed band</b>	53kD
<b>Human Gene ID</b>	117177
<b>Human Swiss-Prot Number</b>	Q96QF0
<b>Alternative Names</b>	RAB3IP; RABIN8; Rab-3A-interacting protein; Rab3A-interacting protein; Rabin-3; SSX2-interacting

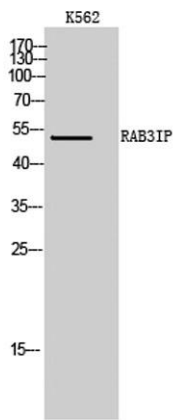




## Background

### protein

similarity:Belongs to the SEC2 family.,subcellular location:Predominantly cytoplasmic but a small proportion colocalizes with SSX2 in the nucleus.,subunit:Interacts with the N-terminal region of SSX2. Interacts with RAB3A and RAB3D.,tissue specificity:Expressed in brain, kidney, heart, pancreas and placenta. Not detected in skeletal muscle or liver.,



Western Blot analysis of K562 cells using RAB3IP Polyclonal Antibody

Immunohistochemistry analysis of paraffin-embedded human brain tissue, using RAB3IP Antibody. The picture on the right is blocked with the synthesized peptide.

