



Mas1-like rabbit pAb

Cat No.:ES4661

For research use only

Overview

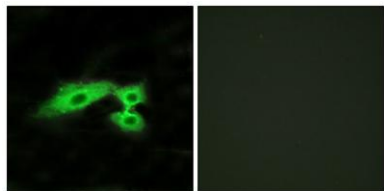
Product Name	Mas1-like rabbit pAb
Host species	Rabbit
Applications	IF;ELISA
Species Cross-Reactivity	Human;Rat;Mouse;
Recommended dilutions	Immunofluorescence: 1/200 - 1/1000. ELISA: 1/5000. Not yet tested in other applications.
Immunogen	The antiserum was produced against synthesized peptide derived from human MAS1L. AA range:31-80
Specificity	Mas1-like Polyclonal Antibody detects endogenous levels of Mas1-like protein.
Formulation	Liquid in PBS containing 50% glycerol, 0.5% BSA and 0.02% sodium azide.
Storage	Store at -20°C. Avoid repeated freeze-thaw cycles.
Protein Name	Mas-related G-protein coupled receptor MRG
Gene Name	MAS1L
Cellular localization	Cell membrane; Multi-pass membrane protein.
Purification	The antibody was affinity-purified from rabbit antiserum by affinity-chromatography using epitope-specific immunogen.
Clonality	Polyclonal
Concentration	1 mg/ml
Observed band	
Human Gene ID	116511
Human Swiss-Prot Number	P35410
Alternative Names	MAS1L; MRG; Mas-related G-protein coupled receptor MRG; MAS-R; MAS1-like
Background	similarity:Belongs to the G-protein coupled receptor 1 family.,similarity:Belongs to the G-protein coupled receptor 1 family. Mas subfamily.,





ELK Biotechnology

Immunofluorescence analysis of HeLa cells, using MAS1L Antibody. The picture on the right is blocked with the synthesized peptide.



+86-27-59760950

ELKbio@ELKbiotech.com

www.elkbiotech.com

23-2, No.388 Gaoxin 2nd Road, Wuhan East Lake Hi-tech Development Zone, Hubei, P.R.C