



Alpha-protein Kinase 2 rabbit pAb

Cat No.:ES4657

For research use only

Overview

Product Name	Alpha-protein Kinase 2 rabbit pAb
Host species	Rabbit
Applications	IHC;IF;ELISA
Species Cross-Reactivity	Human;Rat;Mouse;
Recommended dilutions	Immunohistochemistry: 1/100 - 1/300. ELISA: 1/40000. Not yet tested in other applications.
Immunogen	The antiserum was produced against synthesized peptide derived from human ALPK2. AA range:1741-1790
Specificity	Alpha-protein Kinase 2 Polyclonal Antibody detects endogenous levels of Alpha-protein Kinase 2 protein.
Formulation	Liquid in PBS containing 50% glycerol, 0.5% BSA and 0.02% sodium azide.
Storage	Store at -20°C. Avoid repeated freeze-thaw cycles.
Protein Name	Alpha-protein kinase 2
Gene Name	ALPK2
Cellular localization	Basolateral cell membrane .
Purification	The antibody was affinity-purified from rabbit antiserum by affinity-chromatography using epitope-specific immunogen.
Clonality	Polyclonal
Concentration	1 mg/ml
Observed band	
Human Gene ID	115701
Human Swiss-Prot Number	Q86TB3
Alternative Names	ALPK2; HAK; Alpha-protein kinase 2; Heart alpha-protein kinase
Background	function:Kinases that recognize phosphorylation sites in which the surrounding peptides have an alpha-helical conformation.,similarity:Belongs to the protein kinase superfamily. Alpha-type protein kinase family. ALPK subfamily.,similarity:Contains 1

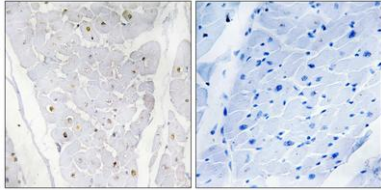




ELK Biotechnology

alpha-type protein kinase domain.,similarity:Contains 1 Ig-like (immunoglobulin-like) domain.,

Immunohistochemistry analysis of paraffin-embedded human heart , using ALPK2 Antibody. The picture on the right is blocked with the synthesized peptide.



+86-27-59760950

ELKbio@ELKbiotech.com

www.elkbiotech.com

23-2, No.388 Gaoxin 2nd Road,Wuhan East Lake Hi-tech Development Zone, Hubei , P.R.C