



KLHL29 rabbit pAb

Cat No.:ES4649

For research use only

Overview

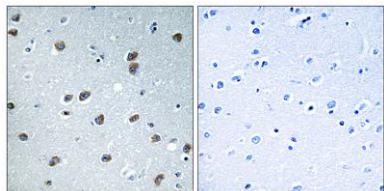
Product Name	KLHL29 rabbit pAb
Host species	Rabbit
Applications	IHC;IF;ELISA
Species Cross-Reactivity	Human;Mouse
Recommended dilutions	Immunohistochemistry: 1/100 - 1/300. ELISA: 1/40000. Not yet tested in other applications.
Immunogen	The antiserum was produced against synthesized peptide derived from human KLHL29. AA range:261-310
Specificity	KLHL29 Polyclonal Antibody detects endogenous levels of KLHL29 protein.
Formulation	Liquid in PBS containing 50% glycerol, 0.5% BSA and 0.02% sodium azide.
Storage	Store at -20°C. Avoid repeated freeze-thaw cycles.
Protein Name	Kelch-like protein 29
Gene Name	KLHL29
Cellular localization	Cul3-RING ubiquitin ligase complex,
Purification	The antibody was affinity-purified from rabbit antiserum by affinity-chromatography using epitope-specific immunogen.
Clonality	Polyclonal
Concentration	1 mg/ml
Observed band	
Human Gene ID	114818
Human Swiss-Prot Number	Q96CT2
Alternative Names	KLHL29; KBTBD9; KIAA1921; Kelch-like protein 29; Kelch repeat and BTB domain-containing protein 9
Background	caution:Although the complete sequence is not known with certainty, sequence shown here appears to be the most probable in accordance with the mouse sequence ortholog.,similarity:Contains 1 BTB (POZ) domain.,similarity:Contains 6 Kelch repeats.,





ELK Biotechnology

Immunohistochemistry analysis of paraffin-embedded human brain tissue, using KLHL29 Antibody. The picture on the right is blocked with the synthesized peptide.



+86-27-59760950

ELKbio@ELKbiotech.com

www.elkbiotech.com

23-2, No.388 Gaoxin 2nd Road, Wuhan East Lake Hi-tech Development Zone, Hubei, P.R.C