



LMTK3 rabbit pAb

Cat No.:ES4648

For research use only

Overview

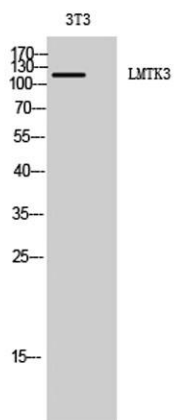
Product Name	LMTK3 rabbit pAb
Host species	Rabbit
Applications	WB;IHC;IF;ELISA
Species Cross-Reactivity	Human;Mouse
Recommended dilutions	Western Blot: 1/500 - 1/2000. Immunohistochemistry: 1/100 - 1/300. ELISA: 1/20000. Not yet tested in other applications.
Immunogen	The antiserum was produced against synthesized peptide derived from human LMTK3. AA range:1251-1300
Specificity	LMTK3 Polyclonal Antibody detects endogenous levels of LMTK3 protein.
Formulation	Liquid in PBS containing 50% glycerol, 0.5% BSA and 0.02% sodium azide.
Storage	Store at -20°C. Avoid repeated freeze-thaw cycles.
Protein Name	Serine/threonine-protein kinase LMTK3
Gene Name	LMTK3
Cellular localization	Membrane ; Single-pass membrane protein . Cell projection, axon . Cell projection, dendrite . Golgi apparatus membrane . Punctate pattern in cell projections.
Purification	The antibody was affinity-purified from rabbit antiserum by affinity-chromatography using epitope-specific immunogen.
Clonality	Polyclonal
Concentration	1 mg/ml
Observed band	40kD
Human Gene ID	114783
Human Swiss-Prot Number	Q96Q04
Alternative Names	LMTK3; KIAA1883; TYKLM3; Serine/threonine-protein kinase LMTK3; Lemur tyrosine kinase 3
Background	catalytic activity:ATP + a protein = ADP + a



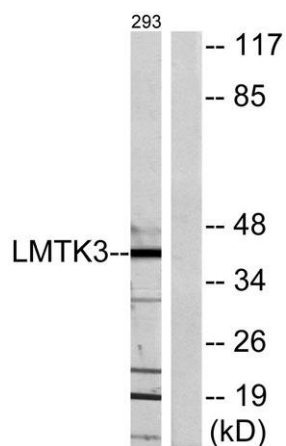


phosphoprotein.,similarity:Belongs to the protein kinase superfamily. Tyr protein kinase family.,similarity:Contains 1 protein kinase domain.,

Western Blot analysis of 3T3 cells using LMTK3 Polyclonal Antibody diluted at 1:2000



Western blot analysis of lysates from 293 cells, using LMTK3 Antibody. The lane on the right is blocked with the synthesized peptide.



Western blot analysis of the lysates from HeLa cells using LMTK3 antibody.

