



CHP rabbit pAb

Cat No.:ES4626

For research use only

Overview

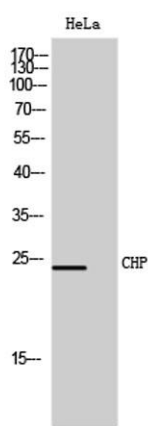
Product Name	CHP rabbit pAb
Host species	Rabbit
Applications	WB;ELISA
Species Cross-Reactivity	Human;Mouse;Rat
Recommended dilutions	Western Blot: 1/500 - 1/2000. ELISA: 1/20000. Not yet tested in other applications.
Immunogen	Synthesized peptide derived from the Internal region of human CHP.
Specificity	CHP Polyclonal Antibody detects endogenous levels of CHP protein.
Formulation	Liquid in PBS containing 50% glycerol, 0.5% BSA and 0.02% sodium azide.
Storage	Store at -20°C. Avoid repeated freeze-thaw cycles.
Protein Name	Calcineurin B homologous protein 1
Gene Name	CHP1
Cellular localization	Nucleus . Cytoplasm . Cytoplasm, cytoskeleton . Endomembrane system . Endoplasmic reticulum-Golgi intermediate compartment . Endoplasmic reticulum . Cell membrane . Membrane ; Lipid-anchor . Localizes in cytoplasmic compartments in dividing cells. Localiz
Purification	The antibody was affinity-purified from rabbit antiserum by affinity-chromatography using epitope-specific immunogen.
Clonality	Polyclonal
Concentration	1 mg/ml
Observed band	24kD
Human Gene ID	11261
Human Swiss-Prot Number	Q99653
Alternative Names	CHP1; CHP; Calcineurin B homologous protein 1; Calcineurin B-like protein; Calcium-binding protein CHP; Calcium-binding protein p22; EF-hand calcium-binding domain-containing protein p22





Background

This gene encodes a phosphoprotein that binds to the Na⁺/H⁺ exchanger NHE1. This protein serves as an essential cofactor which supports the physiological activity of NHE family members and may play a role in the mitogenic regulation of NHE1. The protein shares similarity with calcineurin B and calmodulin and it is also known to be an endogenous inhibitor of calcineurin activity. [provided by RefSeq, Jul 2008],



Western Blot analysis of HeLa cells using CHP Polyclonal Antibody

