



# AKAP 10 rabbit pAb

Cat No.:ES4619

For research use only

## Overview

<b>Product Name</b>	AKAP 10 rabbit pAb
<b>Host species</b>	Rabbit
<b>Applications</b>	WB;IHC;IF;ELISA
<b>Species Cross-Reactivity</b>	Human;Mouse;Rat
<b>Recommended dilutions</b>	Western Blot: 1/500 - 1/2000. Immunohistochemistry: 1/100 - 1/300. Immunofluorescence: 1/200 - 1/1000. ELISA: 1/10000. Not yet tested in other applications.
<b>Immunogen</b>	The antiserum was produced against synthesized peptide derived from human AKAP10. AA range:10-59
<b>Specificity</b>	AKAP 10 Polyclonal Antibody detects endogenous levels of AKAP 10 protein.
<b>Formulation</b>	Liquid in PBS containing 50% glycerol, 0.5% BSA and 0.02% sodium azide.
<b>Storage</b>	Store at -20°C. Avoid repeated freeze-thaw cycles.
<b>Protein Name</b>	A-kinase anchor protein 10 mitochondrial
<b>Gene Name</b>	AKAP10
<b>Cellular localization</b>	Mitochondrion . Membrane . Cytoplasm . Predominantly mitochondrial but also membrane associated and cytoplasmic.
<b>Purification</b>	The antibody was affinity-purified from rabbit antiserum by affinity-chromatography using epitope-specific immunogen.
<b>Clonality</b>	Polyclonal
<b>Concentration</b>	1 mg/ml
<b>Observed band</b>	73kD
<b>Human Gene ID</b>	11216
<b>Human Swiss-Prot Number</b>	O43572
<b>Alternative Names</b>	AKAP10; A-kinase anchor protein 10; mitochondrial; AKAP-10; Dual specificity A kinase-anchoring protein 2; D-AKAP-2; Protein kinase A-anchoring protein 10; PRKA10

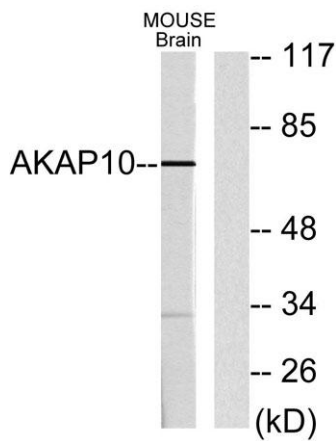
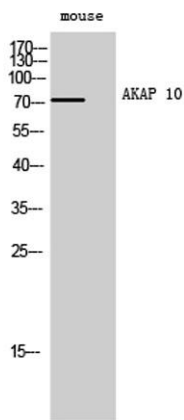




## Background

This gene encodes a member of the A-kinase anchor protein family. A-kinase anchor proteins bind to the regulatory subunits of protein kinase A (PKA) and confine the holoenzyme to discrete locations within the cell. The encoded protein is localized to mitochondria and interacts with both the type I and type II regulatory subunits of PKA. Polymorphisms in this gene may be associated with increased risk of arrhythmias and sudden cardiac death. [provided by RefSeq, May 2012],

Western Blot analysis of mouse cells using AKAP 10 Polyclonal Antibody

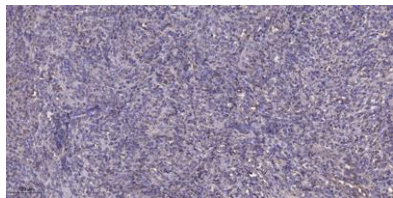


Western blot analysis of lysates from mouse brain, using AKAP10 Antibody. The lane on the right is blocked with the synthesized peptide.





**ELK Biotechnology**



Immunohistochemical analysis of paraffin-embedded human Colon cancer. 1, Antibody was diluted at 1:200(4° overnight). 2, Tris-EDTA,pH9.0 was used for antigen retrieval. 3,Secondary antibody was diluted at 1:200(room temperature, 45min).



+86-27-59760950

[ELKbio@ELKbiotech.com](mailto:ELKbio@ELKbiotech.com)

[www.elkbiotech.com](http://www.elkbiotech.com)

23-2, No.388 Gaoxin 2nd Road,Wuhan East Lake Hi-tech Development Zone, Hubei , P.R.C