



# HIBADH rabbit pAb

Cat No.:ES4600

For research use only

## Overview

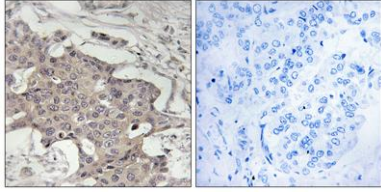
<b>Product Name</b>	HIBADH rabbit pAb
<b>Host species</b>	Rabbit
<b>Applications</b>	IHC;IF;ELISA
<b>Species Cross-Reactivity</b>	Human;Mouse;Rat
<b>Recommended dilutions</b>	Immunohistochemistry: 1/100 - 1/300. ELISA: 1/10000. Not yet tested in other applications.
<b>Immunogen</b>	The antiserum was produced against synthesized peptide derived from human HIBADH. AA range:281-330
<b>Specificity</b>	HIBADH Polyclonal Antibody detects endogenous levels of HIBADH protein.
<b>Formulation</b>	Liquid in PBS containing 50% glycerol, 0.5% BSA and 0.02% sodium azide.
<b>Storage</b>	Store at -20°C. Avoid repeated freeze-thaw cycles.
<b>Protein Name</b>	3-hydroxyisobutyrate dehydrogenase mitochondrial
<b>Gene Name</b>	HIBADH
<b>Cellular localization</b>	Mitochondrion.
<b>Purification</b>	The antibody was affinity-purified from rabbit antiserum by affinity-chromatography using epitope-specific immunogen.
<b>Clonality</b>	Polyclonal
<b>Concentration</b>	1 mg/ml
<b>Observed band</b>	
<b>Human Gene ID</b>	11112
<b>Human Swiss-Prot Number</b>	P31937
<b>Alternative Names</b>	HIBADH; 3-hydroxyisobutyrate dehydrogenase; mitochondrial; HIBADH
<b>Background</b>	This gene encodes a mitochondrial 3-hydroxyisobutyrate dehydrogenase enzyme. The encoded protein plays a critical role in the catabolism of L-valine by catalyzing the oxidation of 3-hydroxyisobutyrate to methylmalonate semialdehyde. [provided by RefSeq, Nov 2011],





**ELK Biotechnology**

Immunohistochemistry analysis of paraffin-embedded human breast carcinoma tissue, using HIBADH Antibody. The picture on the right is blocked with the synthesized peptide.



+86-27-59760950

[ELKbio@ELKbiotech.com](mailto:ELKbio@ELKbiotech.com)

[www.elkbiotech.com](http://www.elkbiotech.com)

23-2, No.388 Gaoxin 2nd Road, Wuhan East Lake Hi-tech Development Zone, Hubei, P.R.C