



Rab 31 rabbit pAb

Cat No.:ES4584

For research use only

Overview

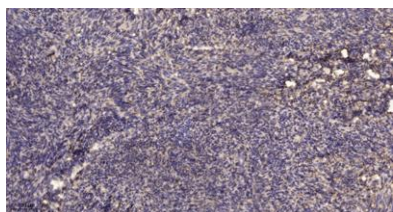
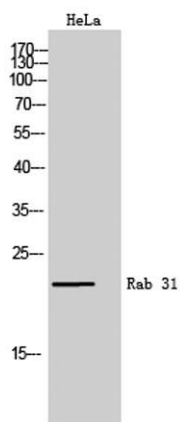
Product Name	Rab 31 rabbit pAb
Host species	Rabbit
Applications	WB; ELISA;IHC
Species Cross-Reactivity	Human;Mouse;Rat
Recommended dilutions	WB 1:500-2000;IHC-p 1:50-300; ELISA 2000-20000
Immunogen	Synthesized peptide derived from Rab 31 . at AA range: 50-130
Specificity	Rab 31 Polyclonal Antibody detects endogenous levels of Rab 31 protein.
Formulation	Liquid in PBS containing 50% glycerol, 0.5% BSA and 0.02% sodium azide.
Storage	Store at -20°C. Avoid repeated freeze-thaw cycles.
Protein Name	Ras-related protein Rab-31
Gene Name	RAB31
Cellular localization	Golgi apparatus, trans-Golgi network . Golgi apparatus, trans-Golgi network membrane ; Lipid-anchor ; Cytoplasmic side . Early endosome . Cytoplasmic vesicle, phagosome . Cytoplasmic vesicle, phagosome membrane ; Lipid-anchor ; Cytoplasmic side . Rapidly
Purification	The antibody was affinity-purified from rabbit antiserum by affinity-chromatography using epitope-specific immunogen.
Clonality	Polyclonal
Concentration	1 mg/ml
Observed band	21kD
Human Gene ID	11031
Human Swiss-Prot Number	Q13636
Alternative Names	RAB31; RAB22B; Ras-related protein Rab-31; Ras-related protein Rab-22B
Background	Small GTP-binding proteins of the RAB family, such as RAB31, play essential roles in vesicle and granule targeting (Bao et al., 2002 [PubMed





11784320)].[supplied by OMIM, Jul 2009],

Western Blot analysis of HeLa cells using Rab 31
Polyclonal Antibody



Immunohistochemical analysis of paraffin-embedded human uterus. 1, Antibody was diluted at 1:200(4° overnight). 2, Tris-EDTA,pH9.0 was used for antigen retrieval. 3,Secondary antibody was diluted at 1:200(room temperature, 45min).

