



ACSVL6 rabbit pAb

Cat No.:ES4577

For research use only

Overview

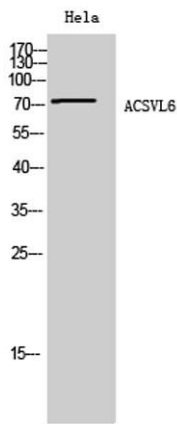
Product Name	ACSVL6 rabbit pAb
Host species	Rabbit
Applications	WB;IHC;IF;ELISA
Species Cross-Reactivity	Human;Rat;Mouse;
Recommended dilutions	Western Blot: 1/500 - 1/2000. Immunohistochemistry: 1/100 - 1/300. Immunofluorescence: 1/200 - 1/1000. ELISA: 1/40000. Not yet tested in other applications.
Immunogen	The antiserum was produced against synthesized peptide derived from human SLC27A5. AA range:481-530
Specificity	ACSVL6 Polyclonal Antibody detects endogenous levels of ACSVL6 protein.
Formulation	Liquid in PBS containing 50% glycerol, 0.5% BSA and 0.02% sodium azide.
Storage	Store at -20°C. Avoid repeated freeze-thaw cycles.
Protein Name	Bile acyl-CoA synthetase
Gene Name	SLC27A5
Cellular localization	Endoplasmic reticulum membrane ; Multi-pass membrane protein . Microsome . Cell membrane ; Multi-pass membrane protein .
Purification	The antibody was affinity-purified from rabbit antiserum by affinity-chromatography using epitope-specific immunogen.
Clonality	Polyclonal
Concentration	1 mg/ml
Observed band	75kD
Human Gene ID	10998
Human Swiss-Prot Number	Q9Y2P5
Alternative Names	SLC27A5; ACSB; ACSVL6; FACVL3; FATP5; Bile acyl-CoA synthetase; BACS; Bile acid-CoA ligase; BA-CoA ligase; BAL; Cholate--CoA ligase; Fatty acid transport protein 5; FATP-5; Fatty-acid-coenzyme A





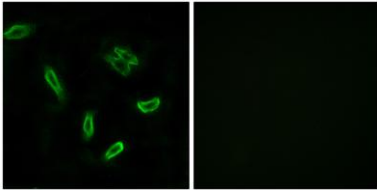
Background

ligase; very long-chain 3; Solute carrier fam
The protein encoded by this gene is an isozyme of very long-chain acyl-CoA synthetase (VLCS). It is capable of activating very long-chain fatty-acids containing 24- and 26-carbons. It is expressed in liver and associated with endoplasmic reticulum but not with peroxisomes. Its primary role is in fatty acid elongation or complex lipid synthesis rather than in degradation. This gene has a mouse ortholog. [provided by RefSeq, Jul 2008],



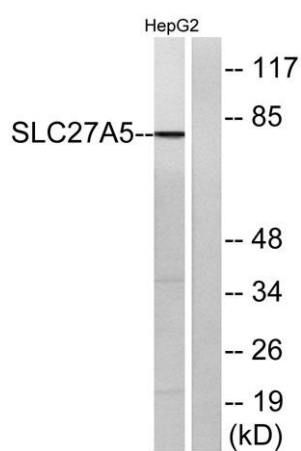
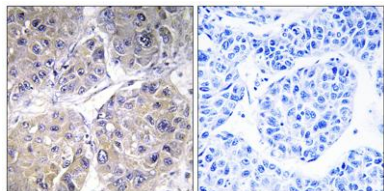
Western Blot analysis of HeLa cells using ACSVL6
Polyclonal Antibody diluted at 1:1000

Immunofluorescence analysis of A549 cells, using
SLC27A5 Antibody. The picture on the right is blocked
with the synthesized peptide.





Immunohistochemistry analysis of paraffin-embedded human liver carcinoma tissue, using SLC27A5 Antibody. The picture on the right is blocked with the synthesized peptide.



Western blot analysis of lysates from HepG2 cells, using SLC27A5 Antibody. The lane on the right is blocked with the synthesized peptide.

