



SRp46 rabbit pAb

Cat No.:ES4571

For research use only

Overview

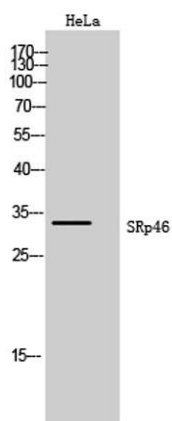
Product Name	SRp46 rabbit pAb
Host species	Rabbit
Applications	WB;IHC;IF;ELISA
Species Cross-Reactivity	Human;Rat;Mouse;
Recommended dilutions	Western Blot: 1/500 - 1/2000. Immunohistochemistry: 1/100 - 1/300. ELISA: 1/40000. Not yet tested in other applications.
Immunogen	The antiserum was produced against synthesized peptide derived from human SFRS2B. AA range:31-80
Specificity	SRp46 Polyclonal Antibody detects endogenous levels of SRp46 protein.
Formulation	Liquid in PBS containing 50% glycerol, 0.5% BSA and 0.02% sodium azide.
Storage	Store at -20°C. Avoid repeated freeze-thaw cycles.
Protein Name	Serine/arginine-rich splicing factor 8
Gene Name	SRSF8
Cellular localization	Nucleus .
Purification	The antibody was affinity-purified from rabbit antiserum by affinity-chromatography using epitope-specific immunogen.
Clonality	Polyclonal
Concentration	1 mg/ml
Observed band	32kD
Human Gene ID	10929
Human Swiss-Prot Number	Q9BRL6
Alternative Names	SRSF8; SFRS2B; SRP46; Serine/arginine-rich splicing factor 8; Pre-mRNA-splicing factor SRP46; Splicing factor SRp46; Splicing factor; arginine/serine-rich 2B
Background	This gene encodes a member of a family of proteins containing a ribonucleoprotein (RNP)-type RNA binding motif and a carboxyl-terminal



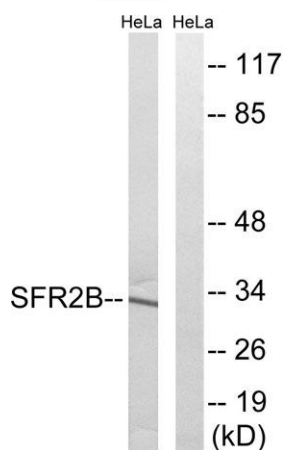


arginine-serine-rich (RS) domain. The encoded protein functions as a pre-mRNA splicing factor. There is a pseudogene for this gene on chromosome 7. Alternative splicing results in multiple transcript variants. [provided by RefSeq, Jun 2013],

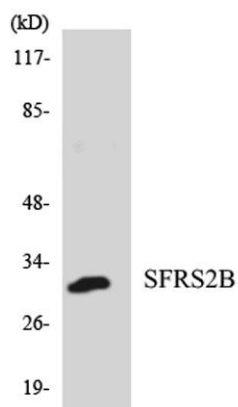
Western Blot analysis of HeLa cells using SRp46 Polyclonal Antibody cells nucleus extracted by Minute TM Cytoplasmic and Nuclear Fractionation kit (SC-003, Inventbiotech, MN, USA).



Western blot analysis of lysates from HeLa cells, using SFRS2B Antibody. The lane on the right is blocked with the synthesized peptide.

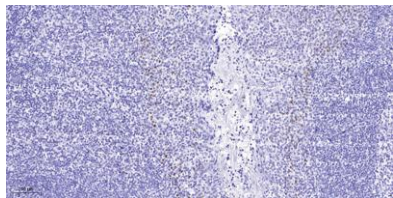


Western blot analysis of the lysates from HepG2 cells using SFRS2B antibody.





ELK Biotechnology



Immunohistochemical analysis of paraffin-embedded human tonsil. 1, Antibody was diluted at 1:200(4° overnight). 2, Tris-EDTA,pH9.0 was used for antigen retrieval. 3,Secondary antibody was diluted at 1:200(room temperature, 45min).



+86-27-59760950

ELKbio@ELKbiotech.com

www.elkbiotech.com

23-2, No.388 Gaoxin 2nd Road,Wuhan East Lake Hi-tech Development Zone, Hubei , P.R.C