



# JTB rabbit pAb

Cat No.:ES4568

For research use only

## Overview

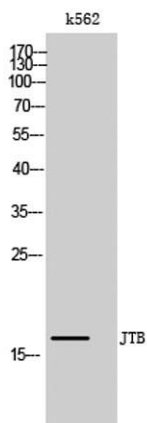
<b>Product Name</b>	JTB rabbit pAb
<b>Host species</b>	Rabbit
<b>Applications</b>	WB;IHC
<b>Species Cross-Reactivity</b>	Human;Rat;Mouse;
<b>Recommended dilutions</b>	WB 1:500-2000;IHC-p 1:50-300
<b>Immunogen</b>	The antiserum was produced against synthesized peptide derived from human JTB. AA range:10-59
<b>Specificity</b>	JTB Polyclonal Antibody detects endogenous levels of JTB protein.
<b>Formulation</b>	Liquid in PBS containing 50% glycerol, 0.5% BSA and 0.02% sodium azide.
<b>Storage</b>	Store at -20°C. Avoid repeated freeze-thaw cycles.
<b>Protein Name</b>	Protein JTB
<b>Gene Name</b>	JTB
<b>Cellular localization</b>	Membrane ; Single-pass type I membrane protein . Mitochondrion . Cytoplasm. Cytoplasm, cytoskeleton, microtubule organizing center, centrosome. Cytoplasm, cytoskeleton, spindle. Detected at the centrosome and along spindle fibers during prophase and metaphase. Detected at the midbody during telophase.
<b>Purification</b>	The antibody was affinity-purified from rabbit antiserum by affinity-chromatography using epitope-specific immunogen.
<b>Clonality</b>	Polyclonal
<b>Concentration</b>	1 mg/ml
<b>Observed band</b>	17kD
<b>Human Gene ID</b>	10899
<b>Human Swiss-Prot Number</b>	O76095
<b>Alternative Names</b>	JTB; HSPC222; Protein JTB; Jumping translocation breakpoint protein; Prostate androgen-regulated protein; PAR protein
<b>Background</b>	similarity:Belongs to the JTB family.,tissue



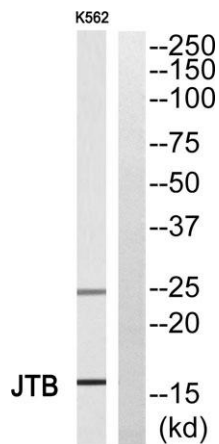


specificity: Expressed in all normal human tissues studied but overexpressed in most of their malignant counterparts.,

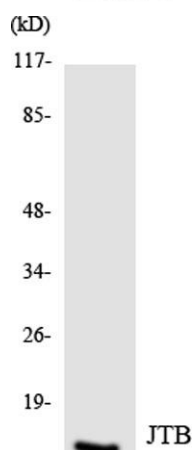
Western Blot analysis of k562 cells using JTB Polyclonal Antibody



Western blot analysis of JTB Antibody. The lane on the right is blocked with the JTB peptide.

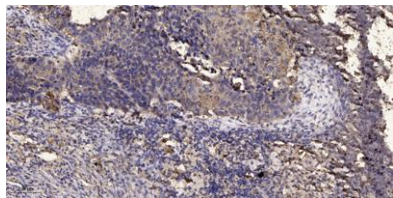


Western blot analysis of the lysates from HUVEC cells using JTB antibody.





**ELK Biotechnology**



Immunohistochemical analysis of paraffin-embedded human Squamous cell carcinoma of lung. 1, Antibody was diluted at 1:200(4° overnight). 2, Tris-EDTA,pH9.0 was used for antigen retrieval. 3,Secondary antibody was diluted at 1:200(room temperature, 45min).



+86-27-59760950

[ELKbio@ELKbiotech.com](mailto:ELKbio@ELKbiotech.com)

[www.elkbiotech.com](http://www.elkbiotech.com)

23-2, No.388 Gaoxin 2nd Road,Wuhan East Lake Hi-tech Development Zone, Hubei , P.R.C