

MALT1 rabbit pAb

Cat No.:ES4567

For research use only

Overview

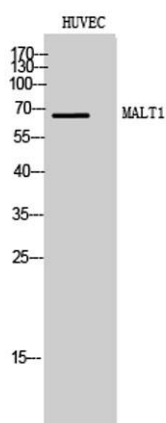
Product Name	MALT1 rabbit pAb
Host species	Rabbit
Applications	WB;IHC;IF;ELISA
Species Cross-Reactivity	Human;Mouse
Recommended dilutions	Western Blot: 1/500 - 1/2000. Immunohistochemistry: 1/100 - 1/300. Immunofluorescence: 1/200 - 1/1000. ELISA: 1/10000. Not yet tested in other applications.
Immunogen	The antiserum was produced against synthesized peptide derived from human MALT1. AA range:301-350
Specificity	MALT1 Polyclonal Antibody detects endogenous levels of MALT1 protein.
Formulation	Liquid in PBS containing 50% glycerol, 0.5% BSA and 0.02% sodium azide.
Storage	Store at -20°C. Avoid repeated freeze-thaw cycles.
Protein Name	Mucosa-associated lymphoid tissue lymphoma translocation protein 1
Gene Name	MALT1
Cellular localization	Cytoplasm, perinuclear region . Nucleus . Shuttles between the nucleus and cytoplasm. Found in perinuclear structures together with BCL10. .
Purification	The antibody was affinity-purified from rabbit antiserum by affinity-chromatography using epitope-specific immunogen.
Clonality	Polyclonal
Concentration	1 mg/ml
Observed band	90kD
Human Gene ID	10892
Human Swiss-Prot Number	Q9UDY8
Alternative Names	MALT1; MLT; Mucosa-associated lymphoid tissue lymphoma translocation protein 1; MALT lymphoma-associated translocation; Paracaspase



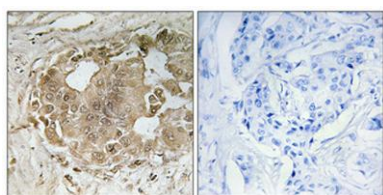


Background

This gene has been found to be recurrently rearranged in chromosomal translocation with two other genes - baculoviral IAP repeat-containing protein 3 (also known as apoptosis inhibitor 2) and immunoglobulin heavy chain locus - in mucosa-associated lymphoid tissue lymphomas. The protein encoded by this gene may play a role in NF-kappaB activation. Two alternatively spliced transcript variants encoding different isoforms have been described for this gene. [provided by RefSeq, Jul 2008],



Western Blot analysis of HUVEC cells using MALT1 Polyclonal Antibody

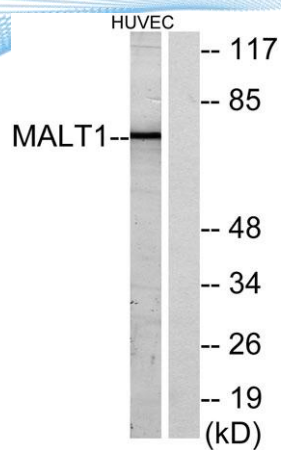


Immunohistochemical analysis of paraffin-embedded Human breast cancer. Antibody was diluted at 1:100(4° overnight). High-pressure and temperature Tris-EDTA,pH8.0 was used for antigen retrieval. Negative contrl (right) obtained from antibody was pre-absor





ELK Biotechnology



Western blot analysis of lysates from HUVEC cells, using MALT1 Antibody. The lane on the right is blocked with the synthesized peptide.



+86-27-59760950

ELKbio@ELKbiotech.com

www.elkbiotech.com

23-2, No.388 Gaoxin 2nd Road,Wuhan East Lake Hi-tech Development Zone, Hubei , P.R.C