



Choriogonadotropin β rabbit pAb

Cat No.:ES4560

For research use only

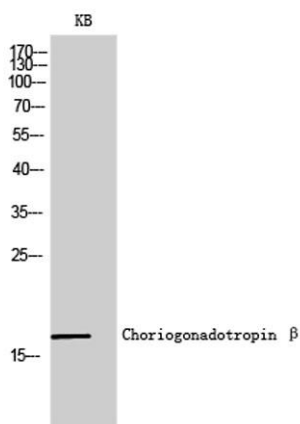
Overview

Product Name	Choriogonadotropin β rabbit pAb
Host species	Rabbit
Applications	WB;IHC;IF;ELISA
Species Cross-Reactivity	Human;Rat;Mouse;
Recommended dilutions	Western Blot: 1/500 - 1/2000. Immunohistochemistry: 1/100 - 1/300. ELISA: 1/10000. Not yet tested in other applications.
Immunogen	The antiserum was produced against synthesized peptide derived from human hCG beta. AA range:101-150
Specificity	Choriogonadotropin β Polyclonal Antibody detects endogenous levels of Choriogonadotropin β protein.
Formulation	Liquid in PBS containing 50% glycerol, 0.5% BSA and 0.02% sodium azide.
Storage	Store at -20°C. Avoid repeated freeze-thaw cycles.
Protein Name	Choriogonadotropin subunit beta
Gene Name	CGB
Cellular localization	extracellular region,
Purification	The antibody was affinity-purified from rabbit antiserum by affinity-chromatography using epitope-specific immunogen.
Clonality	Polyclonal
Concentration	1 mg/ml
Observed band	20kD
Human Gene ID	1082/93659/94027/94115
Human Swiss-Prot Number	P01233
Alternative Names	CGB; CGB3; CGB5; CGB7; CGB8; Choriogonadotropin subunit beta; CG-beta; Chorionic gonadotrophin chain beta
Background	This gene is a member of the glycoprotein hormone beta chain family and encodes the beta 3 subunit of chorionic gonadotropin (CG). Glycoprotein hormones are heterodimers consisting of a common



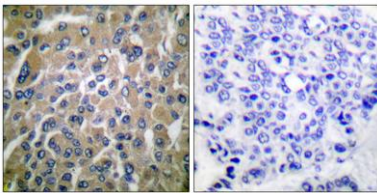


alpha subunit and a unique beta subunit which confers biological specificity. CG is produced by the trophoblastic cells of the placenta and stimulates the ovaries to synthesize the steroids that are essential for the maintenance of pregnancy. The beta subunit of CG is encoded by 6 genes which are arranged in tandem and inverted pairs on chromosome 19q13.3 and contiguous with the luteinizing hormone beta subunit gene. [provided by RefSeq, Jul 2008],



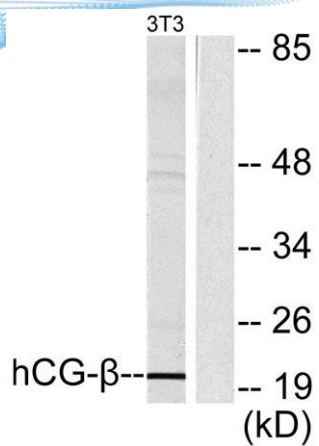
Western Blot analysis of KB cells using Choriogonadotropin β Polyclonal Antibody diluted at 1:2000

Immunohistochemistry analysis of paraffin-embedded human breast carcinoma tissue, using hCG beta Antibody. The picture on the right is blocked with the synthesized peptide.





ELK Biotechnology



Western blot analysis of lysates from NIH/3T3 cells, using hCG beta Antibody. The lane on the right is blocked with the synthesized peptide.



+86-27-59760950

ELKbio@ELKbiotech.com

www.elkbiotech.com

23-2, No.388 Gaoxin 2nd Road,Wuhan East Lake Hi-tech Development Zone, Hubei , P.R.C