



ZNF460 rabbit pAb

Cat No.:ES4553

For research use only

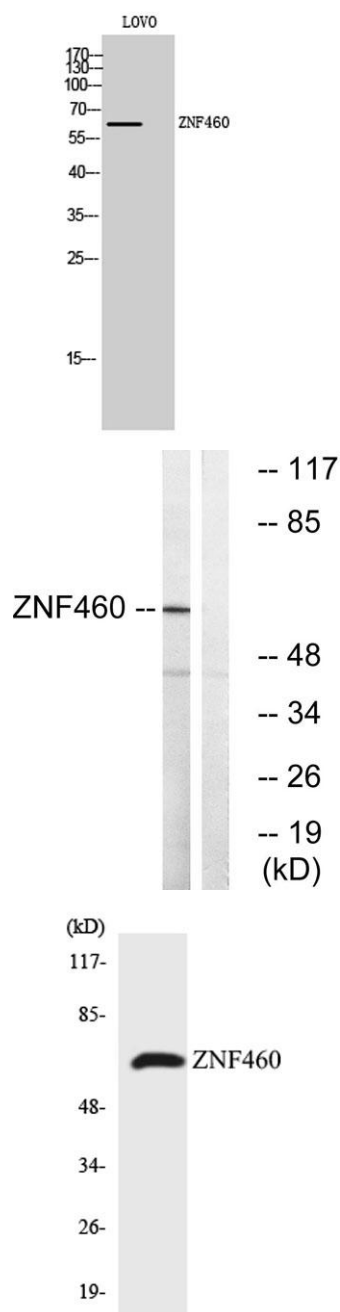
Overview

Product Name	ZNF460 rabbit pAb
Host species	Rabbit
Applications	WB;ELISA
Species Cross-Reactivity	Human;Rat;Mouse;
Recommended dilutions	Western Blot: 1/500 - 1/2000. ELISA: 1/10000. Not yet tested in other applications.
Immunogen	The antiserum was produced against synthesized peptide derived from human ZNF460. AA range:461-510
Specificity	ZNF460 Polyclonal Antibody detects endogenous levels of ZNF460 protein.
Formulation	Liquid in PBS containing 50% glycerol, 0.5% BSA and 0.02% sodium azide.
Storage	Store at -20°C. Avoid repeated freeze-thaw cycles.
Protein Name	Zinc finger protein 460
Gene Name	ZNF460
Cellular localization	Nucleus .
Purification	The antibody was affinity-purified from rabbit antiserum by affinity-chromatography using epitope-specific immunogen.
Clonality	Polyclonal
Concentration	1 mg/ml
Observed band	64kD
Human Gene ID	10794
Human Swiss-Prot Number	Q14592
Alternative Names	ZNF460; ZNF272; Zinc finger protein 460; Zinc finger protein 272; Zinc finger protein HZF8
Background	zinc finger protein 460(ZNF460) Homo sapiens Zinc finger proteins, such as ZNF272, interact with nucleic acids and have diverse functions. The zinc finger domain is a conserved amino acid sequence motif containing 2 specifically positioned cysteines and 2 histidines that are involved in coordinating





zinc. Kruppel-related proteins form 1 family of zinc finger proteins. See ZFP93 (MIM 604749) for additional information on zinc finger proteins.[supplied by OMIM, May 2004],



Western Blot analysis of LOVO cells using ZNF460 Polyclonal Antibody. Secondary antibody(catalog#:RS0002) was diluted at 1:20000 cells nucleus extracted by Minute TM Cytoplasmic and Nuclear Fractionation kit (SC-003,Inventbiotech,MN,USA).

Western blot analysis of lysates from LOVO cells, using ZNF460 Antibody. The lane on the right is blocked with the synthesized peptide.

Western blot analysis of the lysates from HepG2 cells using ZNF460 antibody.

