



MASP-2 rabbit pAb

Cat No.:ES4548

For research use only

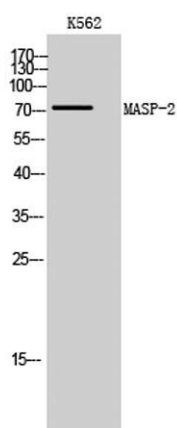
Overview

Product Name	MASP-2 rabbit pAb
Host species	Rabbit
Applications	WB;ELISA
Species Cross-Reactivity	Human;Rat;Mouse;
Recommended dilutions	Western Blot: 1/500 - 1/2000. ELISA: 1/20000. Not yet tested in other applications.
Immunogen	The antiserum was produced against synthesized peptide derived from human MASP2. AA range:227-276
Specificity	MASP-2 Polyclonal Antibody detects endogenous levels of MASP-2 protein.
Formulation	Liquid in PBS containing 50% glycerol, 0.5% BSA and 0.02% sodium azide.
Storage	Store at -20°C. Avoid repeated freeze-thaw cycles.
Protein Name	Mannan-binding lectin serine protease 2
Gene Name	MASP2
Cellular localization	Secreted.
Purification	The antibody was affinity-purified from rabbit antiserum by affinity-chromatography using epitope-specific immunogen.
Clonality	Polyclonal
Concentration	1 mg/ml
Observed band	75kD
Human Gene ID	10747
Human Swiss-Prot Number	O00187
Alternative Names	MASP2; Mannan-binding lectin serine protease 2; MBL-associated serine protease 2; Mannose-binding protein-associated serine protease 2; MASP-2 mannan binding lectin serine peptidase 2(MASP2)
Background	Homo sapiens This gene encodes a member of the peptidase S1 family of serine proteases. The encoded preproprotein is proteolytically processed to generate A and B chains that heterodimerize to

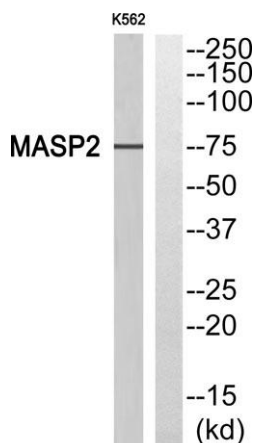




form the mature protease. This protease cleaves complement components C2 and C4 in order to generate C3 convertase in the lectin pathway of the complement system. The encoded protease also plays a role in the coagulation cascade through cleavage of prothrombin to form thrombin. Myocardial infarction and acute stroke patients exhibit reduced serum concentrations of the encoded protein. Alternative splicing results in multiple transcript variants, at least one of which encodes an isoform that is proteolytically processed. [provided by RefSeq, Feb 2016],



Western Blot analysis of K562 cells using MASP-2 Polyclonal Antibody

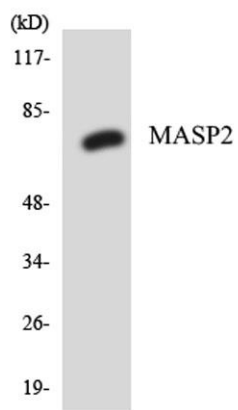


Western blot analysis of MASP2 Antibody. The lane on the right is blocked with the MASP2 peptide.





ELK Biotechnology



Western blot analysis of the lysates from HT-29 cells using MASP2 antibody.



+86-27-59760950

ELKbio@ELKbiotech.com

www.elkbiotech.com

23-2, No.388 Gaoxin 2nd Road, Wuhan East Lake Hi-tech Development Zone, Hubei, P.R.C