



TCFL5 rabbit pAb

Cat No.:ES4545

For research use only

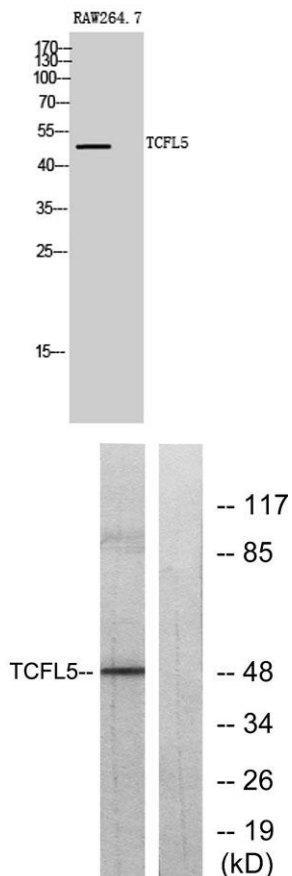
Overview

Product Name	TCFL5 rabbit pAb
Host species	Rabbit
Applications	WB;IHC;IF;ELISA
Species Cross-Reactivity	Human;Mouse
Recommended dilutions	Western Blot: 1/500 - 1/2000. Immunohistochemistry: 1/100 - 1/300. ELISA: 1/20000. Not yet tested in other applications.
Immunogen	The antiserum was produced against synthesized peptide derived from human TCFL5. AA range:311-360
Specificity	TCFL5 Polyclonal Antibody detects endogenous levels of TCFL5 protein.
Formulation	Liquid in PBS containing 50% glycerol, 0.5% BSA and 0.02% sodium azide.
Storage	Store at -20°C. Avoid repeated freeze-thaw cycles.
Protein Name	Transcription factor-like 5 protein
Gene Name	TCFL5
Cellular localization	Nucleus .
Purification	The antibody was affinity-purified from rabbit antiserum by affinity-chromatography using epitope-specific immunogen.
Clonality	Polyclonal
Concentration	1 mg/ml
Observed band	48kD
Human Gene ID	10732
Human Swiss-Prot Number	Q9UL49
Alternative Names	TCFL5; CHA; E2BP1; Transcription factor-like 5 protein; Cha transcription factor; HPV-16 E2-binding protein 1; E2BP-1
Background	developmental stage:Isoform 3 is specifically expressed in primary spermatocytes at the pachytene stage, but not those at leptoneuma stage. Not expressed in other testicular cells, including





spermatogonia located in the basal compartment of the seminiferous tubule or spermatids.,disease:Antibodies against TCFL5 are present in sera from patients with Chagas' disease, an autoimmune disease caused by Trypanosoma cruzi. Two different epitopes that mimic Trypanosoma cruzi antigens have been identified: R1 and R3 epitopes, which are recognized by T- and B-cells, respectively.,function:Putative transcription factor. Isoform 3 may play a role in early spermatogenesis.,similarity:Contains 1 basic helix-loop-helix (bHLH) domain.,subunit:Efficient DNA binding requires dimerization with another bHLH protein.,tissue specificity:Isoform 3 is testis specific. Isoform 2 is pancreas specific.,



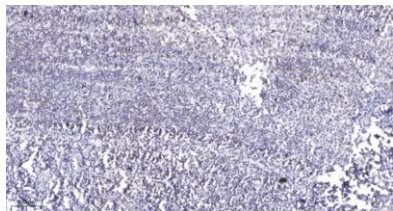
Western Blot analysis of RAW264.7 cells using TCFL5 Polyclonal Antibody cells nucleus extracted by Minute TM Cytoplasmic and Nuclear Fractionation kit (SC-003, Inventbiotech, MN, USA).

Western blot analysis of lysates from RAW264.7 cells, using TCFL5 Antibody. The lane on the right is blocked with the synthesized peptide.





ELK Biotechnology



Immunohistochemical analysis of paraffin-embedded human tonsil. 1, Antibody was diluted at 1:200(4° overnight). 2, Tris-EDTA,pH9.0 was used for antigen retrieval. 3,Secondary antibody was diluted at 1:200(room temperature, 45min).



+86-27-59760950

ELKbio@ELKbiotech.com

www.elkbiotech.com

23-2, No.388 Gaoxin 2nd Road,Wuhan East Lake Hi-tech Development Zone, Hubei , P.R.C