



NUDC rabbit pAb

Cat No.:ES4543

For research use only

Overview

Product Name	NUDC rabbit pAb
Host species	Rabbit
Applications	WB;IHC;IF;ELISA
Species Cross-Reactivity	Human;Mouse;Rat
Recommended dilutions	Western Blot: 1/500 - 1/2000. Immunohistochemistry: 1/100 - 1/300. ELISA: 1/10000. Not yet tested in other applications.
Immunogen	The antiserum was produced against synthesized peptide derived from human NudC. AA range:282-331
Specificity	NUDC Polyclonal Antibody detects endogenous levels of NUDC protein.
Formulation	Liquid in PBS containing 50% glycerol, 0.5% BSA and 0.02% sodium azide.
Storage	Store at -20°C. Avoid repeated freeze-thaw cycles.
Protein Name	Nuclear migration protein nudC
Gene Name	NUDC
Cellular localization	Cytoplasm, cytoskeleton. Nucleus . Cytoplasm, cytoskeleton, spindle . Midbody . In a filamentous pattern adjacent to the nucleus of migrating cerebellar granule cells. Colocalizes with tubulin and dynein and with the microtubule organizing center. Distributed throughout the cytoplasm of non-migrating cells. A small proportion is nuclear, in a punctate pattern. Localizes to the mitotic spindle in a EML4-dependent manner (PubMed:25789526). .
Purification	The antibody was affinity-purified from rabbit antiserum by affinity-chromatography using epitope-specific immunogen.
Clonality	Polyclonal
Concentration	1 mg/ml
Observed band	38kD





Human Gene ID

10726

Human Swiss-Prot Number

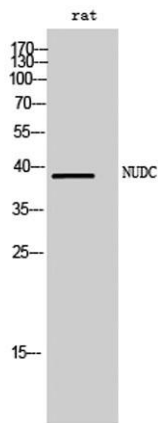
Q9Y266

Alternative Names

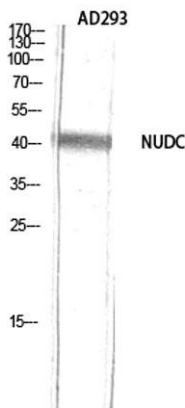
NUDC; Nuclear migration protein nudC; Nuclear distribution protein C homolog

Background

This gene encodes a nuclear distribution protein that plays an essential role in mitosis and cytokinesis. The encoded protein is involved in spindle formation during mitosis and in microtubule organization during cytokinesis. Pseudogenes of this gene are found on chromosome 2. [provided by RefSeq, Feb 2012],

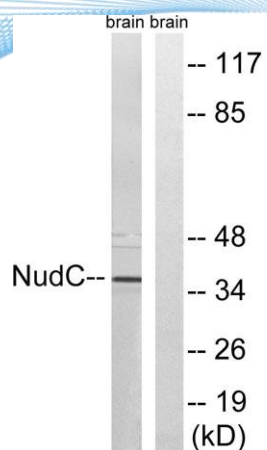


Western Blot analysis of rat cells using NUDC Polyclonal Antibody diluted at 1:2000

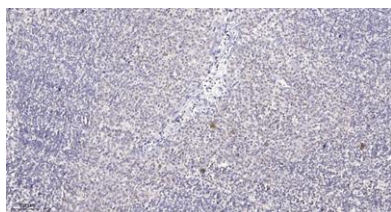


Western Blot analysis of AD293 using NUDC Polyclonal Antibody diluted at 1:2000





Western blot analysis of lysates from rat brain cells, using NudC Antibody. The lane on the right is blocked with the synthesized peptide.



Immunohistochemical analysis of paraffin-embedded human tonsil. 1, Antibody was diluted at 1:200(4° overnight). 2, Tris-EDTA,pH9.0 was used for antigen retrieval. 3,Secondary antibody was diluted at 1:200(room temperature, 30min).

