



NUDC (phospho Ser326) rabbit pAb

Cat No.:ES4542

For research use only

Overview

| | |
|---------------------------------|---|
| Product Name | NUDC (phospho Ser326) rabbit pAb |
| Host species | Rabbit |
| Applications | WB;IHC;IF;ELISA |
| Species Cross-Reactivity | Human;Mouse;Rat |
| Recommended dilutions | Western Blot: 1/500 - 1/2000. Immunohistochemistry: 1/100 - 1/300. ELISA: 1/5000. Not yet tested in other applications. |
| Immunogen | The antiserum was produced against synthesized peptide derived from human NudC around the phosphorylation site of Ser326. AA range:282-331 |
| Specificity | Phospho-NUDC (S326) Polyclonal Antibody detects endogenous levels of NUDC protein only when phosphorylated at S326. |
| Formulation | Liquid in PBS containing 50% glycerol, 0.5% BSA and 0.02% sodium azide. |
| Storage | Store at -20°C. Avoid repeated freeze-thaw cycles. |
| Protein Name | Nuclear migration protein nudC |
| Gene Name | NUDC |
| Cellular localization | Cytoplasm, cytoskeleton. Nucleus . Cytoplasm, cytoskeleton, spindle . Midbody . In a filamentous pattern adjacent to the nucleus of migrating cerebellar granule cells. Colocalizes with tubulin and dynein and with the microtubule organizing center. |
| Purification | Distrib The antibody was affinity-purified from rabbit antiserum by affinity-chromatography using epitope-specific immunogen. |
| Clonality | Polyclonal |
| Concentration | 1 mg/ml |
| Observed band | 45kD |
| Human Gene ID | 10726 |
| Human Swiss-Prot Number | Q9Y266 |
| Alternative Names | NUDC; Nuclear migration protein nudC; Nuclear |

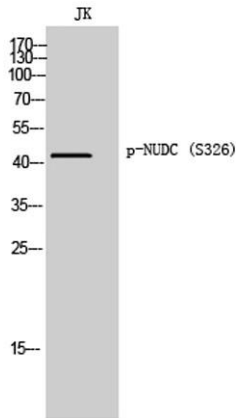




Background

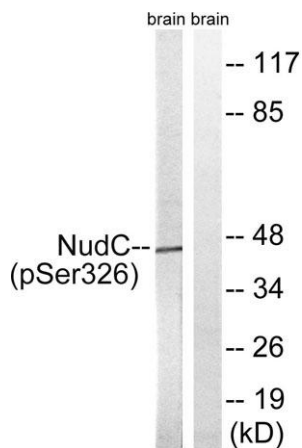
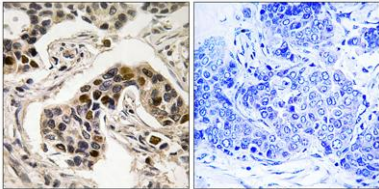
distribution protein C homolog

This gene encodes a nuclear distribution protein that plays an essential role in mitosis and cytokinesis. The encoded protein is involved in spindle formation during mitosis and in microtubule organization during cytokinesis. Pseudogenes of this gene are found on chromosome 2. [provided by RefSeq, Feb 2012],



Western Blot analysis of JK cells using Phospho-NUDC (S326) Polyclonal Antibody

Immunohistochemistry analysis of paraffin-embedded human breast carcinoma, using NudC (Phospho-Ser326) Antibody. The picture on the right is blocked with the phospho peptide.



Western blot analysis of lysates from rat brain, using NudC (Phospho-Ser326) Antibody. The lane on the right is blocked with the phospho peptide.

