



# NFAT5 (phospho Ser1197) rabbit pAb

Cat No.:ES4540

For research use only

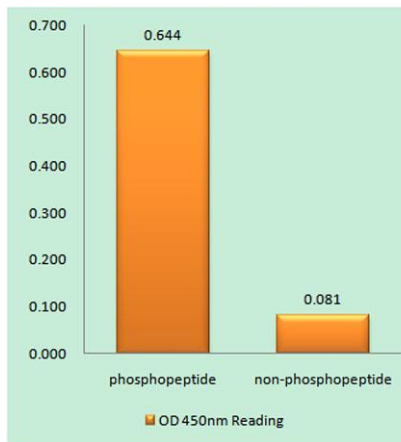
## Overview

<b>Product Name</b>	NFAT5 (phospho Ser1197) rabbit pAb
<b>Host species</b>	Rabbit
<b>Applications</b>	WB;IHC
<b>Species Cross-Reactivity</b>	Human;Mouse
<b>Recommended dilutions</b>	WB 1:500-2000;IHC-p 1:50-300
<b>Immunogen</b>	The antiserum was produced against synthesized peptide derived from human NFAT5 around the phosphorylation site of Ser1197. AA range:1171-1220
<b>Specificity</b>	Phospho-NFAT5 (S1197) Polyclonal Antibody detects endogenous levels of NFAT5 protein only when phosphorylated at S1197.
<b>Formulation</b>	Liquid in PBS containing 50% glycerol, 0.5% BSA and 0.02% sodium azide.
<b>Storage</b>	Store at -20°C. Avoid repeated freeze-thaw cycles.
<b>Protein Name</b>	Nuclear factor of activated T-cells 5
<b>Gene Name</b>	NFAT5
<b>Cellular localization</b>	Nucleus . Cytoplasm . Nuclear distribution increases under hypertonic conditions. .
<b>Purification</b>	The antibody was affinity-purified from rabbit antiserum by affinity-chromatography using epitope-specific immunogen.
<b>Clonality</b>	Polyclonal
<b>Concentration</b>	1 mg/ml
<b>Observed band</b>	
<b>Human Gene ID</b>	10725
<b>Human Swiss-Prot Number</b>	O94916
<b>Alternative Names</b>	NFAT5; KIAA0827; TONEBP; Nuclear factor of activated T-cells 5; NF-AT5; T-cell transcription factor NFAT5; Tonicity-responsive enhancer-binding protein; TonE-binding protein; TonEBP
<b>Background</b>	The product of this gene is a member of the nuclear factors of activated T cells family of transcription



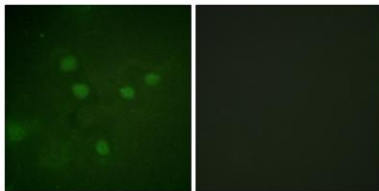


factors. Proteins belonging to this family play a central role in inducible gene transcription during the immune response. This protein regulates gene expression induced by osmotic stress in mammalian cells. Unlike monomeric members of this protein family, this protein exists as a homodimer and forms stable dimers with DNA elements. Multiple transcript variants encoding different isoforms have been found for this gene. [provided by RefSeq, Jul 2008],



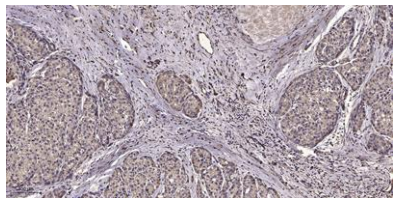
Enzyme-Linked Immunosorbent Assay (Phospho-ELISA) for Immunogen Phosphopeptide (Phospho-left) and Non-Phosphopeptide (Phospho-right), using NFAT5 (Phospho-Ser1197) Antibody

Immunofluorescence analysis of COS7 cells, using NFAT5 (Phospho-Ser1197) Antibody. The picture on the right is blocked with the phospho peptide.





**ELK Biotechnology**



Immunohistochemical analysis of paraffin-embedded human liver cancer. 1, Antibody was diluted at 1:200(4° overnight). 2, Tris-EDTA,pH9.0 was used for antigen retrieval. 3,Secondary antibody was diluted at 1:200(room temperature, 45min).



+86-27-59760950

[ELKbio@ELKbiotech.com](mailto:ELKbio@ELKbiotech.com)

[www.elkbiotech.com](http://www.elkbiotech.com)

23-2, No.388 Gaoxin 2nd Road,Wuhan East Lake Hi-tech Development Zone, Hubei , P.R.C