

NFAT5 (phospho Ser155) rabbit pAb

Cat No.:ES4539

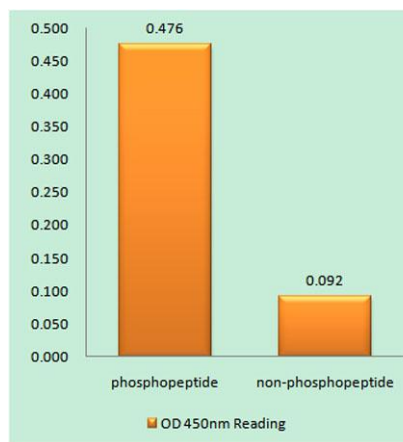
For research use only

Overview

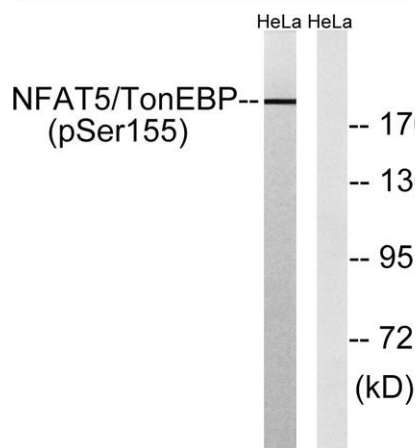
Product Name	NFAT5 (phospho Ser155) rabbit pAb
Host species	Rabbit
Applications	WB;IHC
Species Cross-Reactivity	Human;Mouse
Recommended dilutions	WB 1:500-2000;IHC-p 1:50-300
Immunogen	The antiserum was produced against synthesized peptide derived from human NFAT5/TonEBP around the phosphorylation site of Ser155. AA range:121-170
Specificity	Phospho-NFAT5 (S155) Polyclonal Antibody detects endogenous levels of NFAT5 protein only when phosphorylated at S155.
Formulation	Liquid in PBS containing 50% glycerol, 0.5% BSA and 0.02% sodium azide.
Storage	Store at -20°C. Avoid repeated freeze-thaw cycles.
Protein Name	Nuclear factor of activated T-cells 5
Gene Name	NFAT5
Cellular localization	Nucleus . Cytoplasm . Nuclear distribution increases under hypertonic conditions. .
Purification	The antibody was affinity-purified from rabbit antiserum by affinity-chromatography using epitope-specific immunogen.
Clonality	Polyclonal
Concentration	1 mg/ml
Observed band	200kD
Human Gene ID	10725
Human Swiss-Prot Number	O94916
Alternative Names	NFAT5; KIAA0827; TONEBP; Nuclear factor of activated T-cells 5; NF-AT5; T-cell transcription factor NFAT5; Tonicity-responsive enhancer-binding protein; TonE-binding protein; TonEBP
Background	The product of this gene is a member of the nuclear factors of activated T cells family of transcription



factors. Proteins belonging to this family play a central role in inducible gene transcription during the immune response. This protein regulates gene expression induced by osmotic stress in mammalian cells. Unlike monomeric members of this protein family, this protein exists as a homodimer and forms stable dimers with DNA elements. Multiple transcript variants encoding different isoforms have been found for this gene. [provided by RefSeq, Jul 2008],



Enzyme-Linked Immunosorbent Assay (Phospho-ELISA) for Immunogen Phosphopeptide (Phospho-left) and Non-Phosphopeptide (Phospho-right), using NFAT5/TonEBP (Phospho-Ser155) Antibody

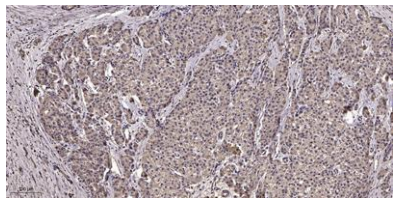


Western blot analysis of lysates from HeLa cells treated with forskolin 40nM 30', using NFAT5/TonEBP (Phospho-Ser155) Antibody. The lane on the right is blocked with the phospho peptide.





ELK Biotechnology



Immunohistochemical analysis of paraffin-embedded human liver cancer. 1, Antibody was diluted at 1:200(4° overnight). 2, Tris-EDTA,pH9.0 was used for antigen retrieval. 3,Secondary antibody was diluted at 1:200(room temperature, 45min).



+86-27-59760950

ELKbio@ELKbiotech.com

www.elkbiotech.com

23-2, No.388 Gaoxin 2nd Road,Wuhan East Lake Hi-tech Development Zone, Hubei , P.R.C