



TCP-1 θ rabbit pAb

Cat No.:ES4536

For research use only

Overview

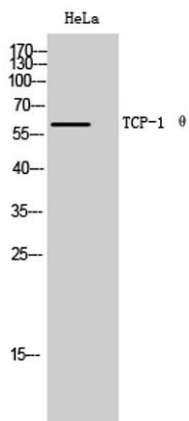
Product Name	TCP-1 θ rabbit pAb
Host species	Rabbit
Applications	WB;ELISA
Species Cross-Reactivity	Human;Mouse
Recommended dilutions	Western Blot: 1/500 - 1/2000. ELISA: 1/5000. Not yet tested in other applications.
Immunogen	The antiserum was produced against synthesized peptide derived from human CCT8. AA range:361-410
Specificity	TCP-1 θ Polyclonal Antibody detects endogenous levels of TCP-1 θ protein.
Formulation	Liquid in PBS containing 50% glycerol, 0.5% BSA and 0.02% sodium azide.
Storage	Store at -20°C. Avoid repeated freeze-thaw cycles.
Protein Name	T-complex protein 1 subunit theta
Gene Name	CCT8
Cellular localization	Cytoplasm . Cytoplasm, cytoskeleton, microtubule organizing center, centrosome . Cytoplasm, cytoskeleton, cilium basal body .
Purification	The antibody was affinity-purified from rabbit antiserum by affinity-chromatography using epitope-specific immunogen.
Clonality	Polyclonal
Concentration	1 mg/ml
Observed band	60kD
Human Gene ID	10694
Human Swiss-Prot Number	P50990
Alternative Names	CCT8; C21orf112; CCTQ; KIAA0002; T-complex protein 1 subunit theta; TCP-1-theta; CCT-theta; Renal carcinoma antigen NY-REN-15
Background	This gene encodes the theta subunit of the CCT chaperonin, which is abundant in the eukaryotic cytosol and may be involved in the transport and



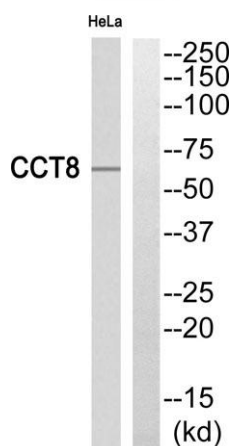


assembly of newly synthesized proteins. Alternative splicing results in multiple transcript variants of this gene. A pseudogene related to this gene is located on chromosome 1. [provided by RefSeq, Sep 2013],

Western Blot analysis of HeLa cells using TCP-1 θ Polyclonal Antibody



Western blot analysis of CCT8 Antibody. The lane on the right is blocked with the CCT8 peptide.



Western blot analysis of the lysates from HeLa cells using CCT8 antibody.

