



# CGREF1 rabbit pAb

Cat No.:ES4533

For research use only

## Overview

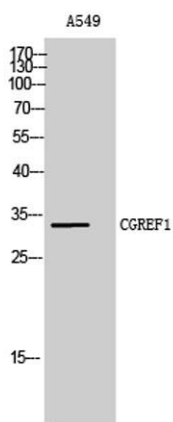
<b>Product Name</b>	CGREF1 rabbit pAb
<b>Host species</b>	Rabbit
<b>Applications</b>	WB;IHC;IF;ELISA
<b>Species Cross-Reactivity</b>	Human;Rat;Mouse;
<b>Recommended dilutions</b>	Western Blot: 1/500 - 1/2000. Immunohistochemistry: 1/100 - 1/300. ELISA: 1/40000. Not yet tested in other applications.
<b>Immunogen</b>	The antiserum was produced against synthesized peptide derived from human CGREF1. AA range:241-290
<b>Specificity</b>	CGREF1 Polyclonal Antibody detects endogenous levels of CGREF1 protein.
<b>Formulation</b>	Liquid in PBS containing 50% glycerol, 0.5% BSA and 0.02% sodium azide.
<b>Storage</b>	Store at -20°C. Avoid repeated freeze-thaw cycles.
<b>Protein Name</b>	Cell growth regulator with EF hand domain protein 1
<b>Gene Name</b>	CGREF1
<b>Cellular localization</b>	Secreted .
<b>Purification</b>	The antibody was affinity-purified from rabbit antiserum by affinity-chromatography using epitope-specific immunogen.
<b>Clonality</b>	Polyclonal
<b>Concentration</b>	1 mg/ml
<b>Observed band</b>	31kD
<b>Human Gene ID</b>	10669
<b>Human Swiss-Prot Number</b>	Q99674
<b>Alternative Names</b>	CGREF1; CGR11; Cell growth regulator with EF hand domain protein 1; Cell growth regulatory gene 11 protein; Hydrophobestin
<b>Background</b>	caution:The sequence shown here is derived from an Ensembl automatic analysis pipeline and should be considered as preliminary data.,function:Able to inhibit growth in several cell lines.,induction:By



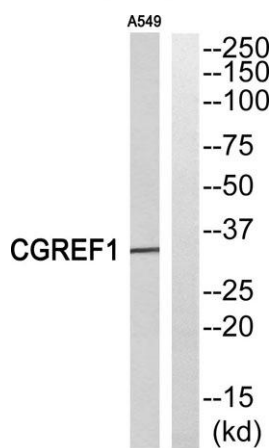


p53.,similarity:Contains 2 EF-hand domains.,

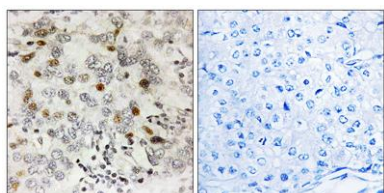
Western Blot analysis of A549 cells using CGREF1 Polyclonal Antibody



Western blot analysis of CGREF1 Antibody. The lane on the right is blocked with the CGREF1 peptide.

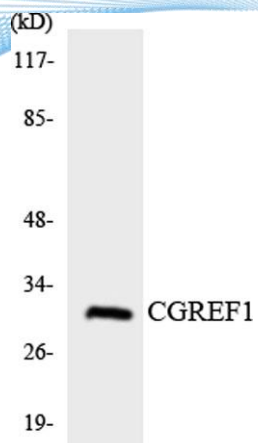


Immunohistochemistry analysis of paraffin-embedded human breast carcinoma, using CGREF1 Antibody. The lane on the right is blocked with the CGREF1 peptide.





**ELK Biotechnology**



Western blot analysis of the lysates from K562 cells using CGREF1 antibody.



+86-27-59760950

[ELKbio@ELKbiotech.com](mailto:ELKbio@ELKbiotech.com)

[www.elkbiotech.com](http://www.elkbiotech.com)

23-2, No.388 Gaoxin 2nd Road, Wuhan East Lake Hi-tech Development Zone, Hubei, P.R.C