



# RRP22 rabbit pAb

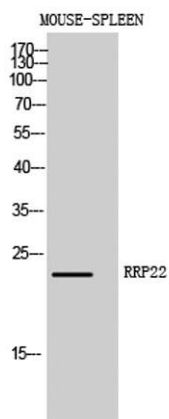
Cat No.:ES4527

For research use only

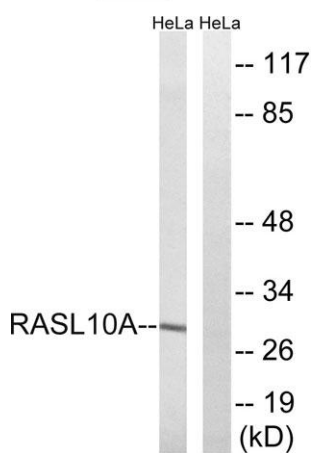
## Overview

<b>Product Name</b>	RRP22 rabbit pAb
<b>Host species</b>	Rabbit
<b>Applications</b>	WB;ELISA
<b>Species Cross-Reactivity</b>	Human;Mouse
<b>Recommended dilutions</b>	Western Blot: 1/500 - 1/2000. ELISA: 1/40000. Not yet tested in other applications.
<b>Immunogen</b>	The antiserum was produced against synthesized peptide derived from human RASL10A. AA range:107-156
<b>Specificity</b>	RRP22 Polyclonal Antibody detects endogenous levels of RRP22 protein.
<b>Formulation</b>	Liquid in PBS containing 50% glycerol, 0.5% BSA and 0.02% sodium azide.
<b>Storage</b>	Store at -20°C. Avoid repeated freeze-thaw cycles.
<b>Protein Name</b>	Ras-like protein family member 10A
<b>Gene Name</b>	RASL10A
<b>Cellular localization</b>	Cell membrane ; Lipid-anchor ; Cytoplasmic side . Nucleus, nucleolus . May cycle in and out of the nucleolus in a GTP-dependent manner.
<b>Purification</b>	The antibody was affinity-purified from rabbit antiserum by affinity-chromatography using epitope-specific immunogen.
<b>Clonality</b>	Polyclonal
<b>Concentration</b>	1 mg/ml
<b>Observed band</b>	30kD
<b>Human Gene ID</b>	10633
<b>Human Swiss-Prot Number</b>	Q92737
<b>Alternative Names</b>	RASL10A; RRP22; Ras-like protein family member 10A; Ras-like protein RRP22; Ras-related protein on chromosome 22
<b>Background</b>	similarity:Belongs to the small GTPase superfamily. Ras family.,

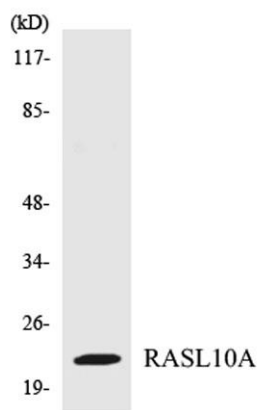




Western Blot analysis of MOUSE-SPLEEN cells using RRP22 Polyclonal Antibody diluted at 1:1000



Western blot analysis of lysates from HeLa cells, using RASL10A Antibody. The lane on the right is blocked with the synthesized peptide.



Western blot analysis of the lysates from 293 cells using RASL10A antibody.

