



# TRIM3 rabbit pAb

Cat No.:ES4521

For research use only

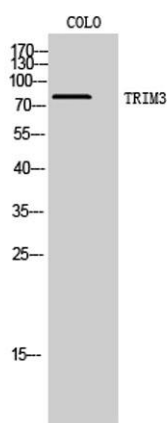
## Overview

Product Name	TRIM3 rabbit pAb
Host species	Rabbit
Applications	WB;IHC;IF;ELISA
Species Cross-Reactivity	Human;Mouse;Rat
Recommended dilutions	Western Blot: 1/500 - 1/2000. Immunohistochemistry: 1/100 - 1/300. Immunofluorescence: 1/200 - 1/1000. ELISA: 1/40000. Not yet tested in other applications.
Immunogen	The antiserum was produced against synthesized peptide derived from human TRIM3. AA range:1-50
Specificity	TRIM3 Polyclonal Antibody detects endogenous levels of TRIM3 protein.
Formulation	Liquid in PBS containing 50% glycerol, 0.5% BSA and 0.02% sodium azide.
Storage	Store at -20°C. Avoid repeated freeze-thaw cycles.
Protein Name	Tripartite motif-containing protein 3
Gene Name	TRIM3
Cellular localization	Cytoplasm . Early endosome . Golgi apparatus, trans-Golgi network . Cell projection, dendrite .
Purification	The antibody was affinity-purified from rabbit antiserum by affinity-chromatography using epitope-specific immunogen.
Clonality	Polyclonal
Concentration	1 mg/ml
Observed band	81kD
Human Gene ID	10612
Human Swiss-Prot Number	O75382
Alternative Names	TRIM3; BERP; RNF22; RNF97; Tripartite motif-containing protein 3; Brain-expressed RING finger protein; RING finger protein 22; RING finger protein 97
Background	The protein encoded by this gene is a member of the tripartite motif (TRIM) family, also called the



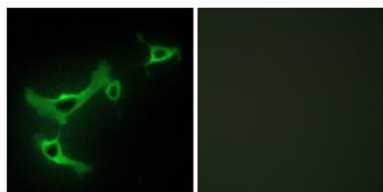


'RING-B-box-coiled-coil' (RBCC) subgroup of RING finger proteins. The TRIM motif includes three zinc-binding domains, a RING, a B-box type 1 and a B-box type 2, and a coiled-coil region. This protein localizes to cytoplasmic filaments. It is similar to a rat protein which is a specific partner for the tail domain of myosin V, a class of myosins which are involved in the targeted transport of organelles. The rat protein can also interact with alpha-actinin-4. Thus it is suggested that this human protein may play a role in myosin V-mediated cargo transport. Alternatively spliced transcript variants encoding the same isoform have been identified. [provided by RefSeq, Jul 2008],



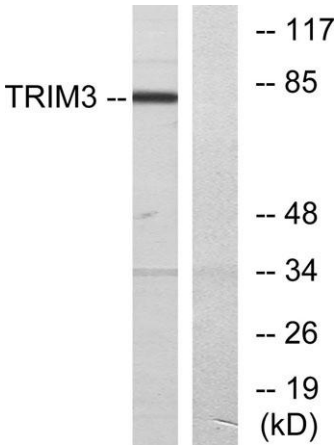
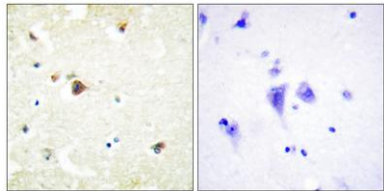
Western Blot analysis of COLO cells using TRIM3 Polyclonal Antibody. Secondary antibody(catalog#:RS0002) was diluted at 1:20000

Immunofluorescence analysis of NIH/3T3 cells, using TRIM3 Antibody. The picture on the right is blocked with the synthesized peptide.





Immunohistochemistry analysis of paraffin-embedded human brain tissue, using TRIM3 Antibody. The picture on the right is blocked with the synthesized peptide.



Western blot analysis of lysates from COLO cells, using TRIM3 Antibody. The lane on the right is blocked with the synthesized peptide.

