



APS rabbit pAb

Cat No.:ES4517

For research use only

Overview

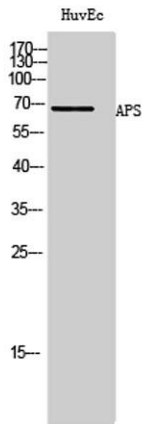
Product Name	APS rabbit pAb
Host species	Rabbit
Applications	WB;ELISA
Species Cross-Reactivity	Human;Mouse;Rat
Recommended dilutions	Western Blot: 1/500 - 1/2000. ELISA: 1/20000. Not yet tested in other applications.
Immunogen	Synthesized peptide derived from the Internal region of human APS.
Specificity	APS Polyclonal Antibody detects endogenous levels of APS protein.
Formulation	Liquid in PBS containing 50% glycerol, 0.5% BSA and 0.02% sodium azide.
Storage	Store at -20°C. Avoid repeated freeze-thaw cycles.
Protein Name	SH2B adapter protein 2
Gene Name	SH2B2
Cellular localization	Cytoplasm . Cell membrane . Cytoplasmic before PDGF stimulation. After PDGF stimulation, localized at the cell membrane and peripheral region.
Purification	The antibody was affinity-purified from rabbit antiserum by affinity-chromatography using epitope-specific immunogen.
Clonality	Polyclonal
Concentration	1 mg/ml
Observed band	67kD
Human Gene ID	10603
Human Swiss-Prot Number	O14492
Alternative Names	SH2B2; APS; SH2B adapter protein 2; Adapter protein with pleckstrin homology and Src homology 2 domains; SH2 and PH domain-containing adapter protein APS
Background	The protein encoded by this gene is expressed in B lymphocytes and contains pleckstrin homology and src homology 2 (SH2) domains. In Burkitt's





ELK Biotechnology

lymphoma cell lines, it is tyrosine-phosphorylated in response to B cell receptor stimulation. Because it binds Shc independent of stimulation and Grb2 after stimulation, it appears to play a role in signal transduction from the receptor to the Shc/Grb2 pathway. [provided by RefSeq, Jun 2009],



Western Blot analysis of HuvEc cells using APS Polyclonal Antibody



+86-27-59760950

ELKbio@ELKbiotech.com

www.elkbiotech.com

23-2, No.388 Gaoxin 2nd Road,Wuhan East Lake Hi-tech Development Zone, Hubei , P.R.C