



TCP-1 η rabbit pAb

Cat No.:ES4509

For research use only

Overview

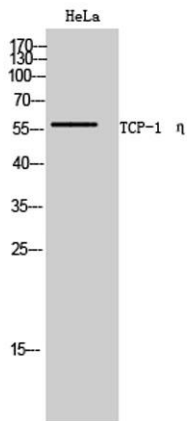
Product Name	TCP-1 η rabbit pAb
Host species	Rabbit
Applications	WB;ELISA
Species Cross-Reactivity	Human;Mouse;Rat
Recommended dilutions	Western Blot: 1/500 - 1/2000. ELISA: 1/5000. Not yet tested in other applications.
Immunogen	The antiserum was produced against synthesized peptide derived from human CCT7. AA range:221-270
Specificity	TCP-1 η Polyclonal Antibody detects endogenous levels of TCP-1 η protein.
Formulation	Liquid in PBS containing 50% glycerol, 0.5% BSA and 0.02% sodium azide.
Storage	Store at -20°C. Avoid repeated freeze-thaw cycles.
Protein Name	T-complex protein 1 subunit eta
Gene Name	CCT7
Cellular localization	Cytoplasm .
Purification	The antibody was affinity-purified from rabbit antiserum by affinity-chromatography using epitope-specific immunogen.
Clonality	Polyclonal
Concentration	1 mg/ml
Observed band	59kD
Human Gene ID	10574
Human Swiss-Prot Number	Q99832
Alternative Names	CCT7; CCTH; NIP7-1; T-complex protein 1 subunit eta; TCP-1-eta; CCT-eta; HIV-1 Nef-interacting protein
Background	This gene encodes a molecular chaperone that is a member of the chaperonin containing TCP1 complex (CCT), also known as the TCP1 ring complex (TRiC). This complex consists of two identical stacked rings, each containing eight different proteins. Unfolded





polypeptides enter the central cavity of the complex and are folded in an ATP-dependent manner. The complex folds various proteins, including actin and tubulin. Alternative splicing results in multiple transcript variants. Related pseudogenes have been identified on chromosomes 5 and 6. [provided by RefSeq, Oct 2009],

Western Blot analysis of HeLa cells using TCP-1 η
Polyclonal Antibody



Western blot analysis of the lysates from HT-29 cells using
CCT7 antibody.

