



TIP60 rabbit pAb

Cat No.:ES4499

For research use only

Overview

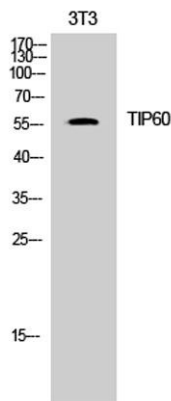
Product Name	TIP60 rabbit pAb
Host species	Rabbit
Applications	IF;ELISA;IHC
Species Cross-Reactivity	Human;Mouse;Rat
Recommended dilutions	IF/ICC 1:50-300; ELISA 1:2000-20000; IHC-p 1:50-200
Immunogen	The antiserum was produced against synthesized peptide derived from human Tip60. AA range:56-105
Specificity	TIP60 Polyclonal Antibody detects endogenous levels of TIP60 protein.
Formulation	Liquid in PBS containing 50% glycerol, 0.5% BSA and 0.02% sodium azide.
Storage	Store at -20°C. Avoid repeated freeze-thaw cycles.
Protein Name	Histone acetyltransferase KAT5
Gene Name	KAT5
Cellular localization	Nucleus . Chromosome . Cytoplasm . Chromosome, centromere, kinetochore . Cytoplasm, cytoskeleton, spindle pole . Nucleus, nucleolus . Cytoplasm, perinuclear region . Upon stimulation with EDN1, it is exported from the nucleus to the perinuclear region and
Purification	The antibody was affinity-purified from rabbit antiserum by affinity-chromatography using epitope-specific immunogen.
Clonality	Polyclonal
Concentration	1 mg/ml
Observed band	55kD
Human Gene ID	10524
Human Swiss-Prot Number	Q92993
Alternative Names	KAT5; HTATIP; TIP60; Histone acetyltransferase KAT5; 60 kDa Tat-interactive protein; Tip60; Histone acetyltransferase HTATIP; HIV-1 Tat interactive protein; Lysine acetyltransferase 5;



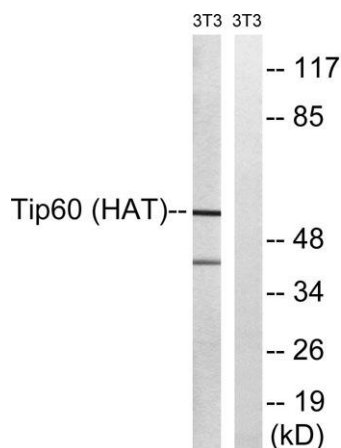
Background

cPLA(2)-interacting protein

The protein encoded by this gene belongs to the MYST family of histone acetyl transferases (HATs) and was originally isolated as an HIV-1 TAT-interactive protein. HATs play important roles in regulating chromatin remodeling, transcription and other nuclear processes by acetylating histone and nonhistone proteins. This protein is a histone acetylase that has a role in DNA repair and apoptosis and is thought to play an important role in signal transduction. Alternative splicing of this gene results in multiple transcript variants. [provided by RefSeq, Jul 2008],



Western Blot analysis of 3T3 cells using TIP60 Polyclonal Antibody. Secondary antibody(catalog#:RS0002) was diluted at 1:20000

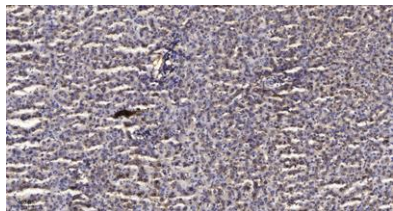


Western blot analysis of lysates from NIH/3T3 cells, treated with starved 24h, using Tip60 Antibody. The lane on the right is blocked with the synthesized peptide.





ELK Biotechnology



Immunohistochemical analysis of paraffin-embedded human liver cancer. 1, Antibody was diluted at 1:200(4° overnight). 2, Tris-EDTA,pH9.0 was used for antigen retrieval. 3,Secondary antibody was diluted at 1:200(room temperature, 45min).



+86-27-59760950

ELKbio@ELKbiotech.com

www.elkbiotech.com

23-2, No.388 Gaoxin 2nd Road,Wuhan East Lake Hi-tech Development Zone, Hubei , P.R.C